

# MAXILLOFACIAL SURGERY

DIGITAL SOLUTIONS

EN



# CONTENTS

04

**Global D**

14

**Digital Solutions**

Artificial intelligence	17
Preparation for surgery	18
Digital Solutions Platform	20
Planned orthognathic surgery and genioplasty	22
Planning supported by Global D	24
Romexis Software® CMF Surgery	27
Custom guides & plates	28
Customised aligners	29
Planned aesthetic surgery	30
Assisted maxillary distraction	32

# Reveal your patients' **personality**

Facial appearance is central to our emotions, our expressions and our identity.

## An uneven smile, a misaligned jaw, visible asymmetry...

For many people, these signs are so much more than an aesthetic imperfection: they are **invisible barriers** preventing them living life to the full.

Studies have confirmed that facial appearance influences the perception of personality in the social and professional spheres\*.

*We are convinced that a successful treatment changes more than a profile. It helps reveal one's true self.*



\* <https://pubmed.ncbi.nlm.nih.gov/24874952>

# Increase synergies

For over **40 years**, we have been placing our **industrial** and **clinical expertise** at your disposal so that together, we can give your **patients** their **smile** back.

**Global D** is a French manufacturer which has always centred itself on preserving biological width. This sensibility enables us today to have a therapeutic arsenal, used for the specialities of **implantology**, **orthodontics** and **maxillofacial**.



**+20,000**  
users in the world



**+10 million**  
medical devices made by  
**Global D** in the world

# French expertise deployed internationally



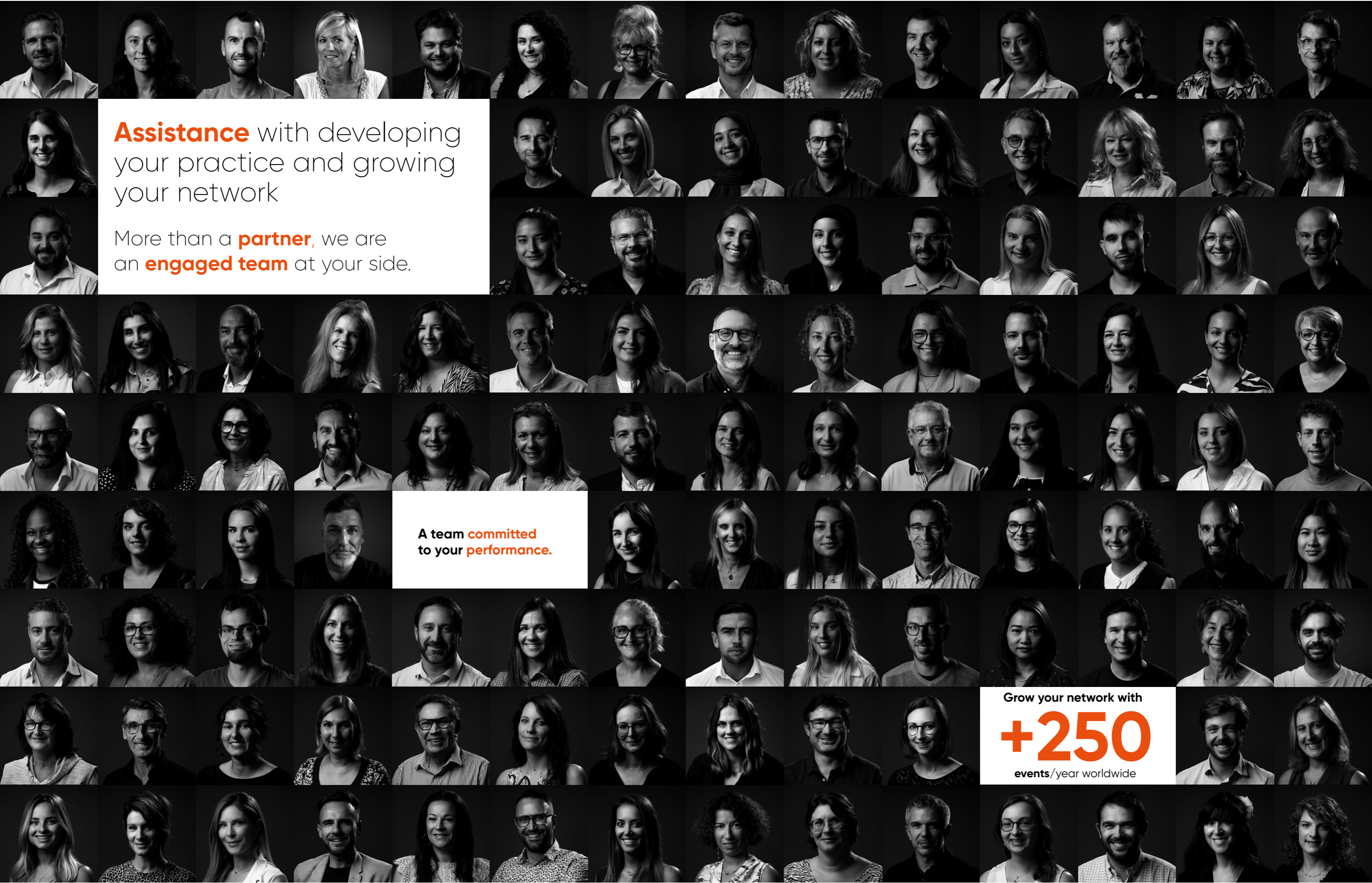
**+25**  
countries

 A subsidiary in **Italy**  
since **2011**

 A subsidiary in **Spain**  
since **2016**

 A subsidiary in **Poland**  
since **2018**



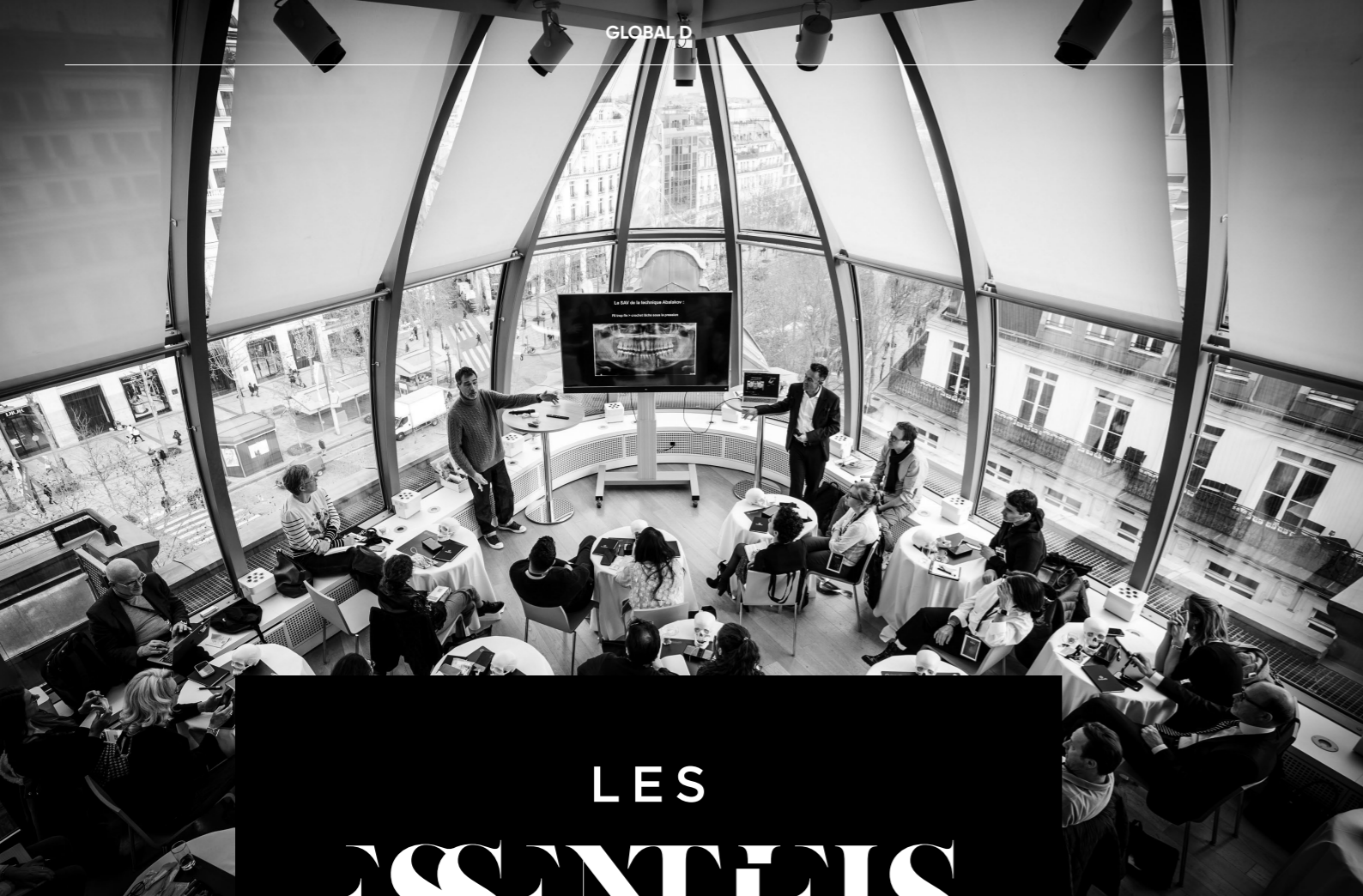


**Assistance** with developing your practice and growing your network

More than a **partner**, we are an **engaged team** at your side.

A team **committed** to your **performance**.

Grow your network with  
**+250**  
 events/year worldwide



# LES ESSENTIELS

It's more than a conference – it's a breath of fresh air

Between **aesthetics** and **function**. Between innovation and **common sense**. Between **science** and **intuition**.

**Les Essentiels** is that rare moment where **practice is refined**, where we allow ourselves to **question**, in order to **progress**, where we leave with ideas, techniques... and sometimes, a **renewed vision**.



The leading orthodontic-surgical conference

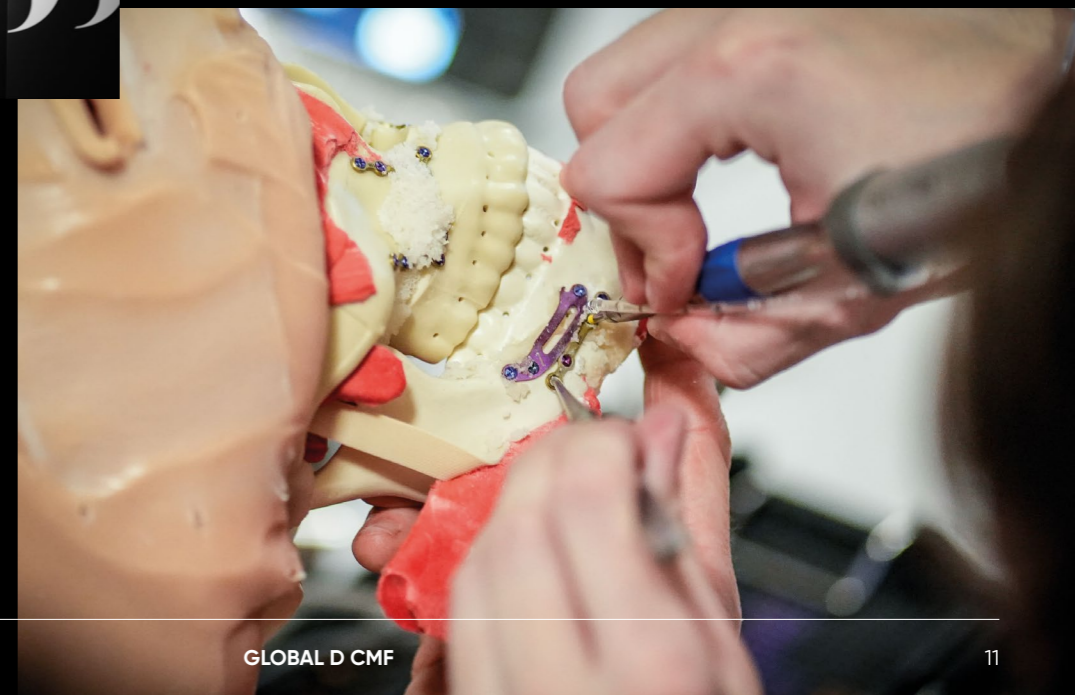


**Les Essentiels** brings together **orthodontists** and **maxillofacial surgeons** with the same goal: to improve orthodontic-surgical management. Complex indications, digital planning, therapeutic coordination, innovations...

A **global vision for the patient**, based on dialogue and coordination. An exacting, interactive format. **Renowned experts**, **clinical cases**, **exchanges between practitioners**, **masterclasses** & **practical exercises**.



FIND OUT MORE +



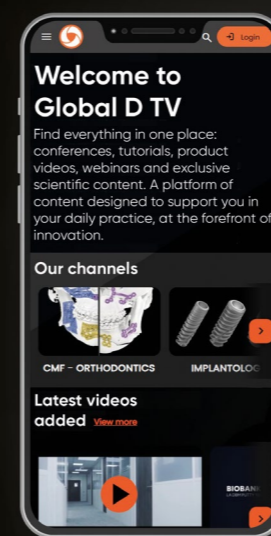
# Shared expertise, a customised experience.



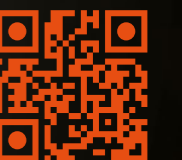
 [tv.globald.com](https://tv.globald.com)

## EXPERTISE ON VIDEO

Explore the world of implantology: the **surgical procedures**, **inspiring conferences** and all the **scientific understanding** of Global D products.



FIND OUT MORE +



# Digital Solutions

The use of **digital solutions** in **maxillofacial surgery** has grown significantly in all fields.

From orthognathic surgery to reconstruction, and including regeneration, the latest generation of three-dimensional acquisition associated with **advanced technologies** for segmentation and conversion of diagnostic files, enables **three-dimensional models** to be obtained which can be used to **simulate maxillofacial surgery**.

## Why plan?

- 01** A calm, precise, and effective surgical procedure.
- 02** To share the surgical treatment plan with the orthodontist.
- 03** To reassure and reduce anxiety.
- 04** To involve and convince the patient of the surgical necessity of their case.
- 05** Our solutions have been designed and developed by highly experienced engineers, prosthetists and surgeons. They meet high quality and regulatory standards, enabling us to obtain reproducible results.

Enter **Global D's open digital world** and remain free to choose which technology you use. We will help you to install the right solution to meet your needs, **and support you in your digital projects.**

# Present at each key moment



## **Askara** Your voice-led maxillofacial assistant

### Your **voice-led** maxillofacial assistant

ASKARA AI IS A VIRTUAL ASSISTANT THAT AUTOMATES CREATION OF YOUR CLINICAL DOCUMENTS



Enregistrement...Appuyez sur "Stop" pour terminer

■ Stop

#### BENEFITS

- **Save time:** up to **8 hours saved a week** thanks to dictation or automatic transcription of the consultation.
- **Practice integration:** works on all browsers, integration with all job-related software.
- **Secured data hosted in France:** Full compliance with regulations (HDS servers in France, health data, GDPR, ISO 27001, etc.).

#### TWO MODES OF USE

- **Active Consultation:** takes note in real time on your behalf during your consultation. Followed by automatic creation of your reports and documents.
- **AI Dictaphone:** a vocal recording = a full document in under a minute.

### TO GENERATE ALL YOUR DOCUMENTS

- ✓ **Automated CBCT reports:** compliant, ready to archive reports.
- ✓ **Operative reports:** with integrated traceability.
- ✓ **Patient and correspondents letters:** written in seconds.
- ✓ **Prescriptions & SmartNotes:** prescriptions and automatic consultation summary, ready to place in your patient record.

FIND OUT MORE +





# iTero

Intra-orals cameras  
**mobile, precise**  
 and **easy** to set up



- With digital orthognathic surgery, everything relies on the initial precision.
- The iTero camera enables reliable optical acquisition, directly integrated with the 3D planning workflow.

**ITERO LUMINA™**  
*intraoral scanner*

**RESULT:** improved occlusal intervention, fewer perioperative adjustments and seamless collaboration with the orthodontist.

iTero secures the surgical plan from the first step.

**Proven clinical reliability:** stable, repeatable and immediately usable data

**Ortho-surgical integration:** continuity between impression, orthodontic set-up and surgical plan

**Occlusal precision:** reliable capture of inter-arches, fewer perioperative adjustments

**Sustainable assistance:** continuous training, support and updates

Manufacturer: Align



# MODJAW™

Mandibular dynamics

**MODJAW 4D.** This pioneering technology enables you to directly integrate the real mandibular movements of your patients on 3D digital twins, providing great precision during your treatments.

**ADVANTAGES**

- Rapid, precise capture
- Visualisation in real time
- Advanced simulation
- Extensive compatibility

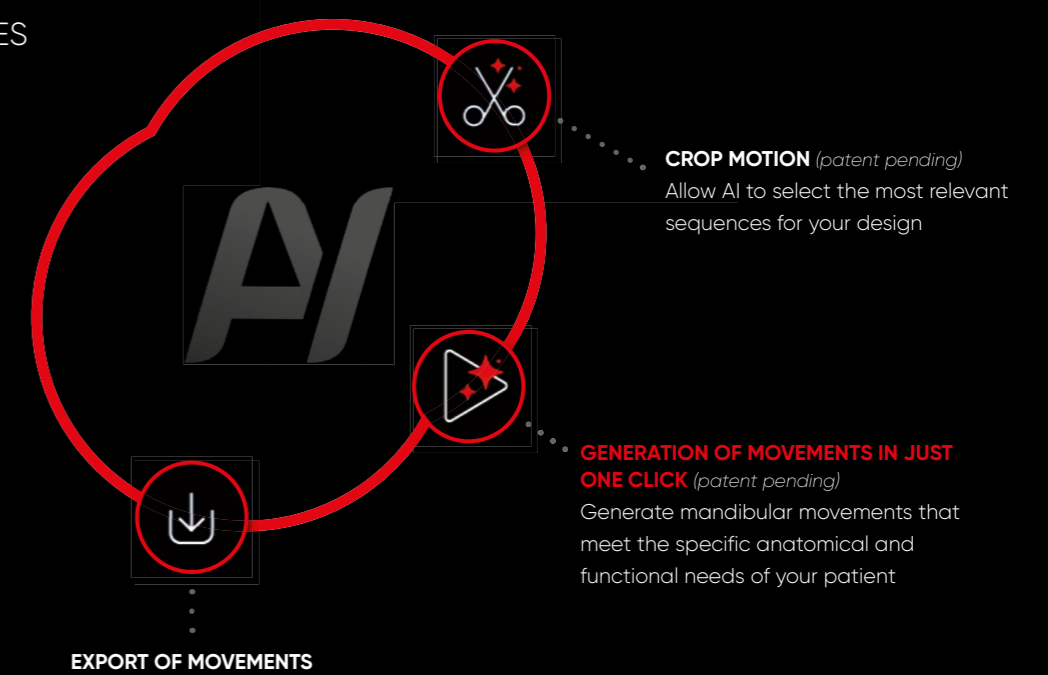


**OPTIMISE YOUR CMF MULTIDISCIPLINARY COLLABORATION**

**NEW FUNCTIONALITIES OPTIMISED BY AI**



Manufacturer: MODJAW



# Digital Solutions Platform

Control the design of your surgical projects

Digital Solutions Platform transforms a complex surgical pathway into a **clear** and **readable procedure**.

- Planned orthognathic surgery and genioplasty
- Planned aesthetic surgery
- Assisted maxillary distraction



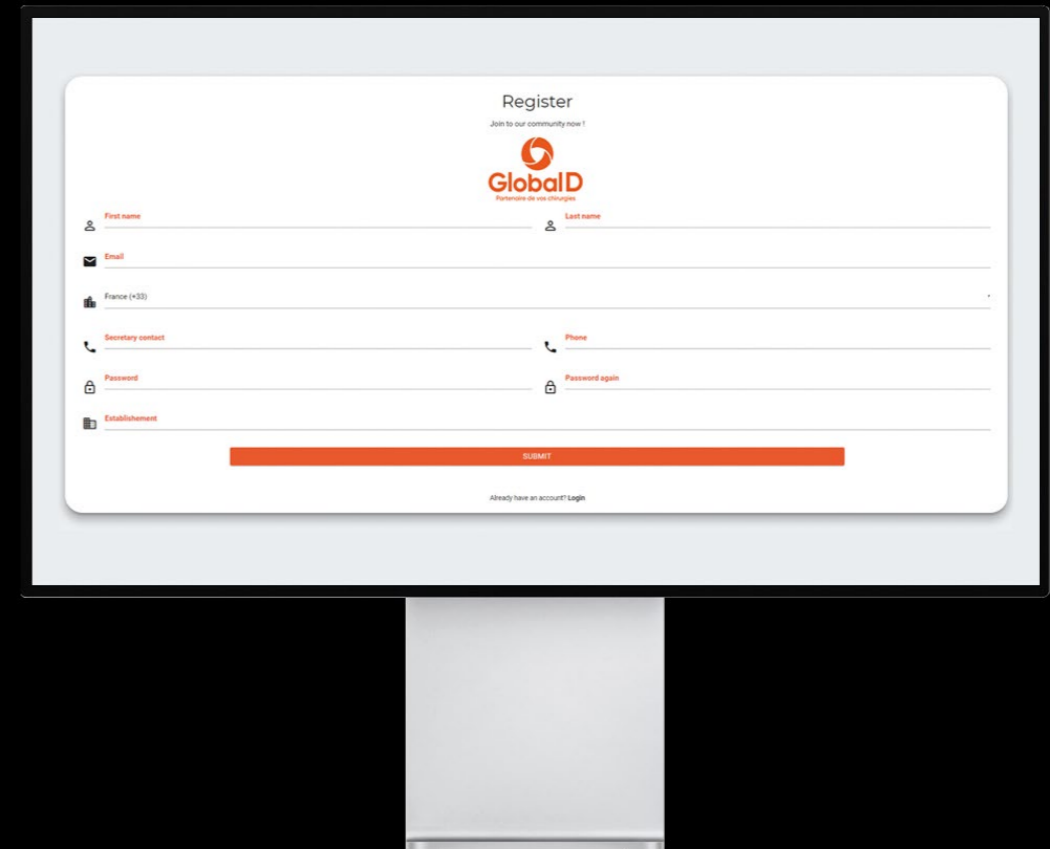
CONTINUITY BETWEEN DESIGN AND MANUFACTURE

ONE SINGLE POINT OF ENTRY

SECURE DATA

CONTROLLED PROCEDURE

DECISIONS MADE EASIER



Find out about our Digital Solutions platform



# Planning supported by **Global D**

A service with **dedicated engineering**

As well as the platform, **Global D** provides you with its team of engineers **specialised** in the use of **digital tools** for planning **maxillofacial surgery**.

## EACH PROJECT BENEFITS FROM:

- A dedicated technical dialogue
- Assistance with planning
- The perspective of an experienced maxillofacial prosthetist
- Customised adjustment via webmeeting



TRUE CLINICAL COLLABORATION

TECHNICAL ANALYSIS OF YOUR CASES



OPTIMISATION OF TREATMENT PLANS

SAFEGUARDING OF COMPLEX INDICATIONS



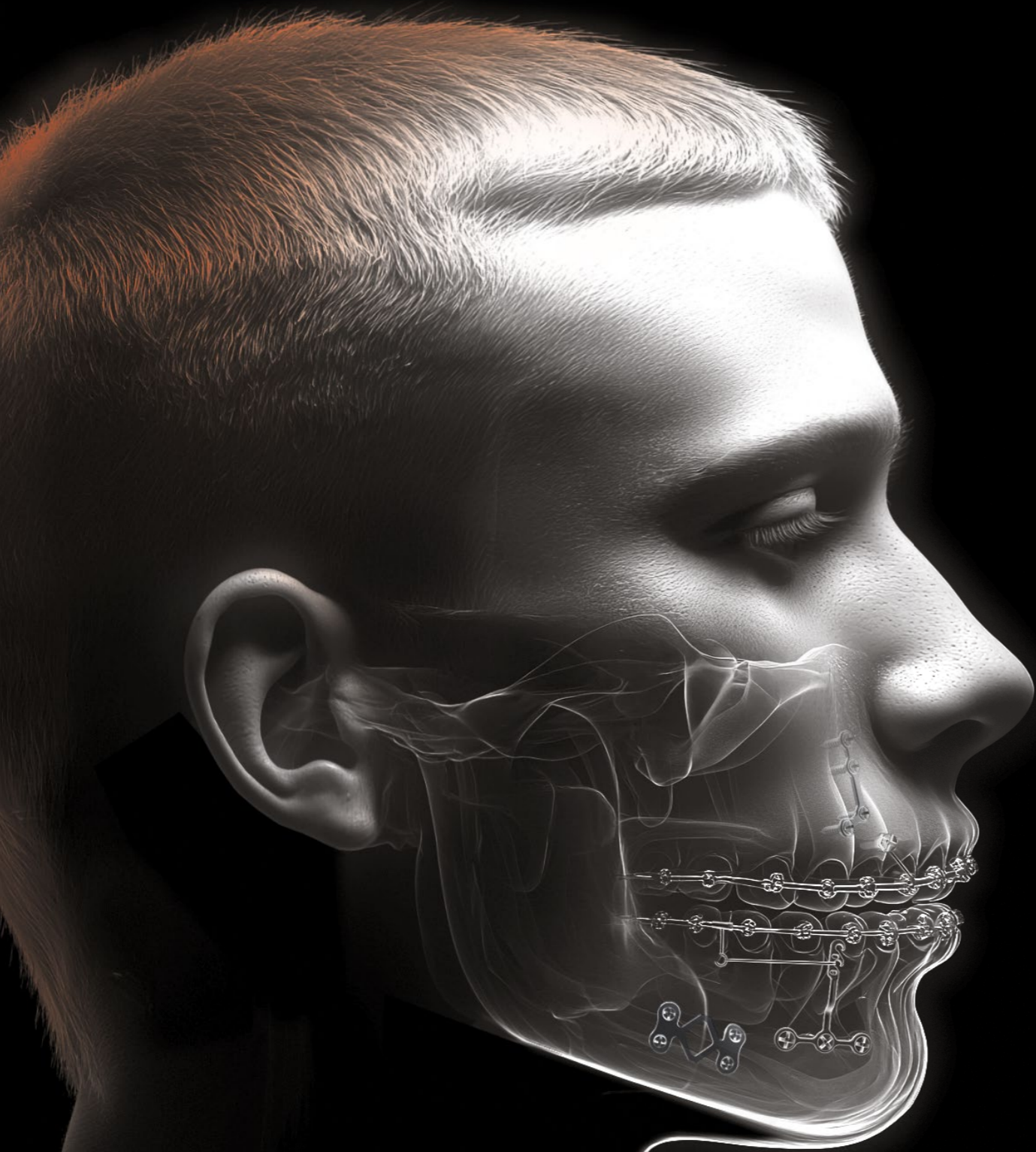
RESPONSIVENESS AND DEDICATED CONTACT

**+ 10 engineers**  
in France and Italy

**+ 2 experts**  
maxillofacial  
**prosthetist**

# Planned orthognathic surgery & genioplasty

From the data to the **decision**



## YOUR SURGICAL EXPERTISE

- Clinical analysis
- **Functional** and **morphological** decisions
- **Control** of the operative procedure

## OUR EXPERT SUPPORT

- Analysis of cases
- **Design** of devices
- **Safeguarding** of **planning**

## A PLATFORM TO ORGANISE AND SIMPLIFY

- **Centralisation** of **data**
- **Clear** visualisation of steps
- **Seamless** project **tracking**

## DECISIONS MADE WITH CONFIDENCE

- **Secure data**
- **Controlled** procedure
- **Continuous** collaboration

Design differently.  
**Together.**

# Romexis<sup>®</sup>

## CMF SURGERY

Design software for  
**orthognathic surgery**



**Romexis<sup>®</sup> CMF Surgery** supports surgeons when preparing for surgical procedures by organising and cross-referencing all the patient data.

The software provides a clear workable reading of the clinical situation to anticipate each step with precision.

### WHAT ROMEXIS CHANGES IN YOUR PRACTICE:

- Centralisation of data from **CBCT, 2D** imaging, **intra-oral** scans and **STL** files combined in one **single platform**
- **Precise anatomical analysis**, clear reading of **bone structures** and **areas of surgical interest**
- **Controlled planning of surgery**, simulation of **bone movements** and preparation for osteotomies
- **Customised** design of devices **STL export** for **aligners**

#### Designed for maxillofacial surgery:

Orthognathic surgery, osteotomies and complex protocols, when precision and proactive planning are essential.

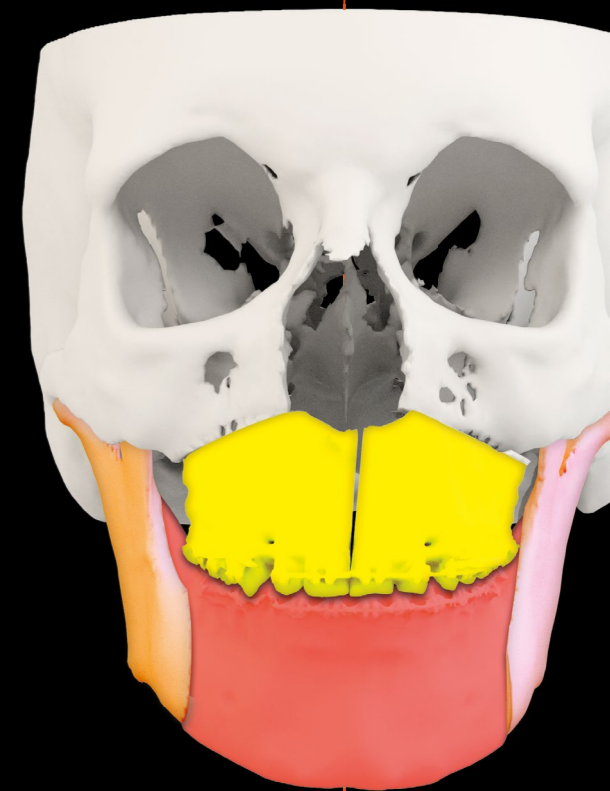
# Two solutions. One identical requirement for **precision.**

The use of **digital planning** in orthognathic surgery enables **reliable transfer** of **pre-operative decisions** to the operating theatre.

Digital planning can lead to the design and use of two types of transfer tools in the operating theatre depending on the surgical philosophy and the level of guiding required:

**Customised surgical aligners and/or custom predrilling cutting guides and implants.**

Developed by **Global D**, these solutions are based on **expert knowledge**, high-quality devices manufactured in Europe and **complete control of digital workflow**, and provide surgical precision, foresight and calm.



**Romexis<sup>®</sup> CMF Surgery,**  
see things differently for **better decision-making**

# Custom guides & plates

**3D PLANNING.**  
**SURGICAL PRECISION.**  
**CUSTOMISED RESULTS.**

The **custom-made Global D** guides and plates adapt to **all surgical philosophies** and precisely reflect the **3D planning**.

Designed by **expert CMF engineers**, manufactured in Europe, they provide **precision, reproducibility** and the **least invasive approach possible** for the patient.



## A PREMIUM SOLUTION

- Customised guides and plates
- Control of bone movement
- Safeguarding of the surgical procedure

A **controlled ecosystem.**  
Digital **continuity** via the  
**Digital Solutions platform.**

FIND OUT MORE +



# SplinTek aligners

Occlusion as a signature of **Global D**

With **SplinTek**, the final occlusion is not simply a consequence of the surgical procedure, but a well-calculated outcome.

Thanks to **Global D expertise** and a **perfectly controlled surgical workflow**, each aligner is designed to **stabilise the occlusion**, ensure the **consistency of the treatment plan** and provide **perioperative reproducibility**.

A **custom** approach, to provide a **high-quality occlusion**, which is **durable** and **predictable**.



More than  
**2,000 cases**/year

FIND OUT MORE +



# Planned aesthetic surgery

## Each face is **unique**

### CUSTOMISATION FOR FACIAL HARMONY

Each face is unique. Our **custom solutions** translate the clinical intention into **precise, consistent and customised aesthetic results**.

A **digital approach** for **clinical decision-making**.

Digital planning enables **visualisation of the expected result** and a clear, **reliable** and **enlightened** treatment plan.

#### TAILORED SOLUTIONS FOR MULTIPLE INDICATIONS. MANDIBULAR ANGLE AND SYMPHYSIS PROSTHESES ALSO FIND THEIR PLACE:

- As a complement or alternative to orthognathic surgery,
- For purely aesthetic reasons,
- Or in case of post-operative bone resorption or mandibular irregularities.

#### KEY BENEFITS

- **Speed:** optimised design and manufacturing timelines
- **Precision:** reliable, reproducible digital planning
- **Quality:** elevated medical requirements and meticulous finishing work
- **Simplicity:** seamless implementation in the operating theatre

FIND OUT MORE +



# Assisted maxillary distraction

## SURGICAL DISTRACTION WITH BONE SUPPORT

Assisted maxillary distraction is a dedicated solution for skeletal corrections requiring controlled progressive expansion.

It enables predictable and secure management thanks to digital planning.



FIND OUT MORE +



- Compact device for **reduced space requirement**
- **Bone-supported**
- Direction of activation indicated by an arrow
- Distractor and placement guide are **grade 5 Titanium**
- Tooth-supported placement guide, for **easy installation**
- **No soldering**, ensuring improved mechanical resistance
- **Monobloc piece** designed by a patented process
- Effective **10mm and 12 mm** activation available

## ADVANTAGES

- **Optimised patient comfort:** Reduced space requirement and controlled installation.
- **Wide range of application:** Suitable for adults (**SARPE**) and children without bone cutting (**MARPE**), depending on clinical strategy.
- **Precise positioning:** Dedicated placement guide ensuring optimal positioning of the distractor, ensuring complete consistency with the plan.

Manufacturer: OneOrtho

**Reveal**  
*your patients'*  
**personality**



# FIELDS OF ACTIVITY

Implantology  
 Oral surgery  
 Pre-implant surgery  
 Craniomaxillofacial surgery  
 Reconstructive surgery  
 Facial trauma surgery  
 Cancer surgery  
 Orthodontics  
 Bone Graft  
 Orthognathic surgery  
 Training

Find all our solutions  
at [www.globald.com](http://www.globald.com)



**Global D**  
 ZI de Sacuny  
 118 Avenue Marcel Mérieux  
 Brignais - France  
 Tel. +33 (0)4 78 56 97 00  
 Fax +33 (0)4 78 56 01 63  
[www.globald.com](http://www.globald.com)



Products **manufactured in FRANCE**



MC-CMF-DIGISOL-EN-ED1-26  
 CATALOG-0185-V01-01