

The image features a dark gray background with several hand-drawn orange lines. These lines form a series of horizontal, slightly curved bands on the left side, resembling a spiral or a series of stacked layers. The lines are thick and have a slightly irregular, sketchy quality.

twin^{kon}[®]

Biological signature



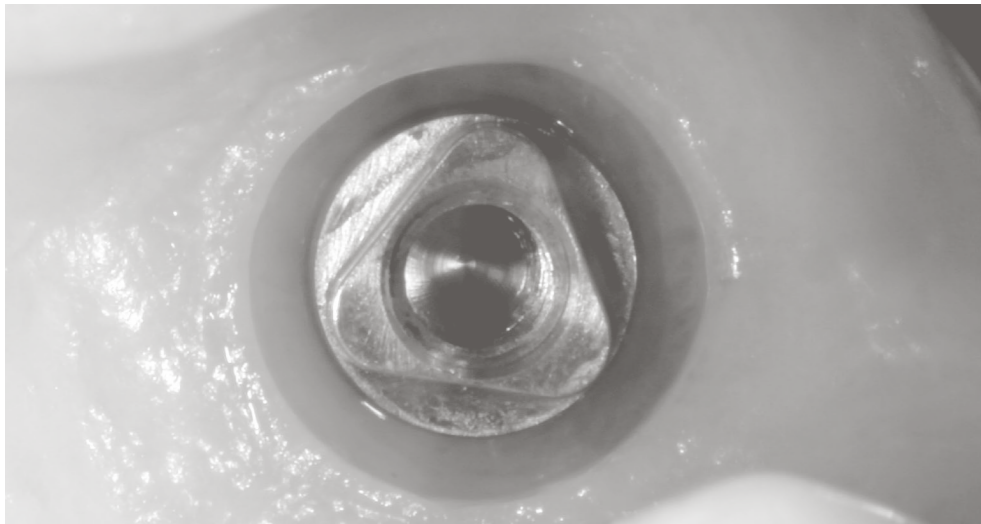
Transmucosal implant with concave collar

“When the twinKon® was designed, more than 10 years ago, our aim, with Yves Douillard, was to provide an innovative, effective solution using a new implant design in line with our thoughts on factors for clinical success and focussing on strengthening the peri-implant collar-mucosa assembly.

With no connective tissue attachment as on natural teeth, we had to find an alternative to mimic nature and create a new ecosystem associated with the geometry of this interface that would be compatible with functional, aesthetic, reproducible and long-lasting implantology.

With thousands of twinKon® inserted to date, we believe that the solution we offer will appeal to practitioners who are receptive to the concept of the peri-implant biological area and maintaining its health over time.”

Dr Jean-François Borel, Dr Philippe Duchatelard.



Courtesy of Dr Philippe Duchatelard

Contents

Characteristics of the twinKon®	P.4
List of instruments	P.16
Implant range	P.22
List of components	P.26



Link to instructions for twinKon® implant

Specificity

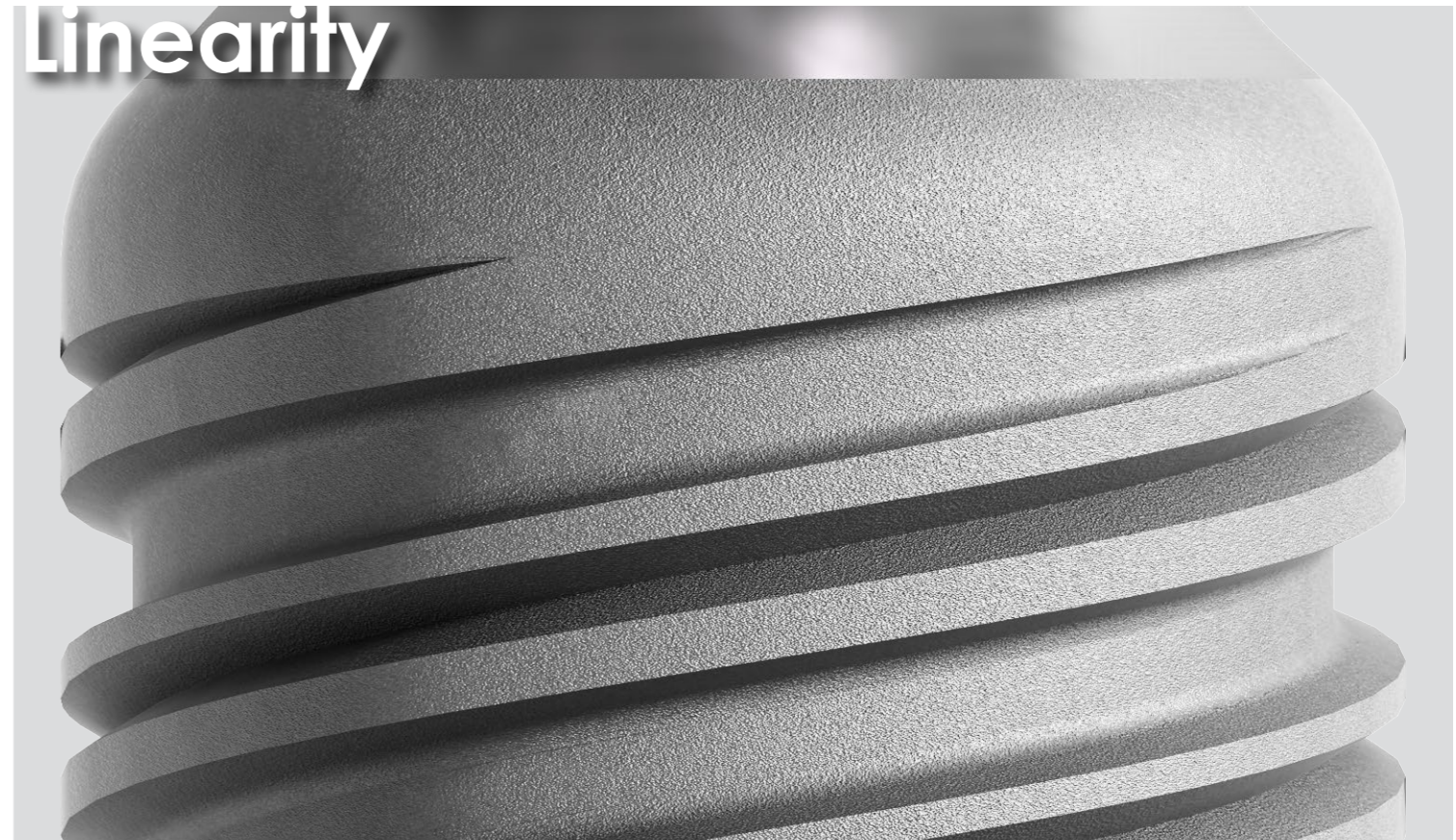


- Concave collar in contact with peri-implant mucosa
- Creation of a mucosal O ring starting from the initial healing phase



Concave collar

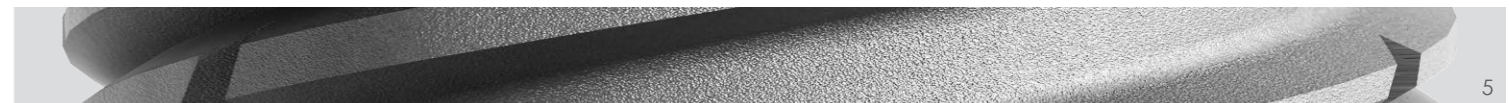
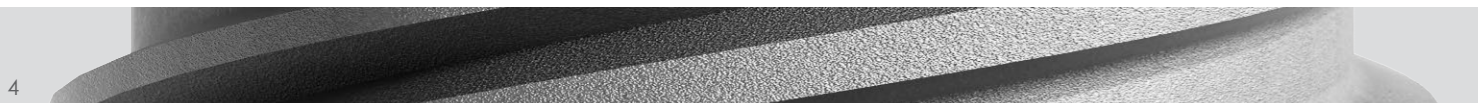
Linearity



- Limit of roughened area-smooth area without any sharp angle
- Progressive profile in contact with peri-implant tissues

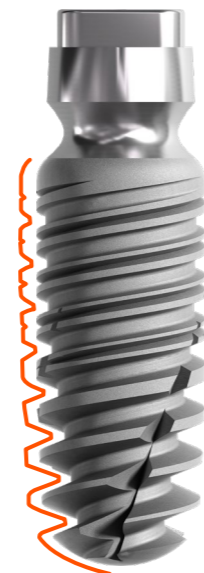


Rounded shoulder



Stability

- Tapered cylindrical body
- Double thread
- Self-tapping profile
- Atraumatic apex
- SA² roughened surface



UNIVERSAL
profile

- Type of connection :
external taper situated
above the concave
collar
- Prosthetic handling shift
to the top of the mucosal
O ring



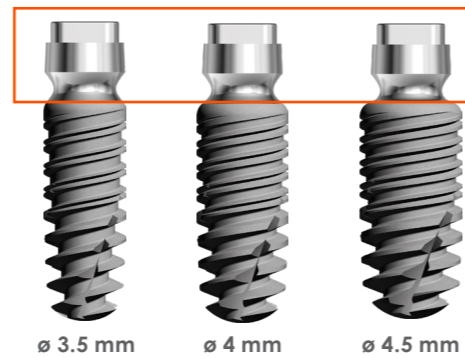
5° external
cone

Feature

Closeness



- Single connection for all three diameters
- Accessibility when handled in mouth
- Visibility of the indexation during prosthetic trials



ø 3.5 mm

ø 4 mm

ø 4.5 mm

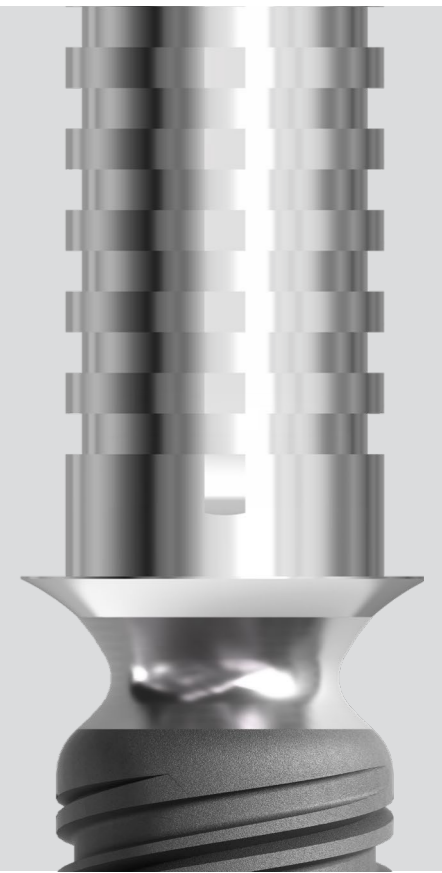
Possibilities



Two-stage



One-stage



Temporary prosthesis

- Can be used in one or two-stage surgery
- Two healing screw profiles: Ø 5 and Ø 6.5 mm
- Screw-retained and cemented prosthesis

- Homothetic designs
- Asymmetric cervical bound
- Indexed Δ or rotational versions $\text{\textcircled{R}}$



Harmonious contours

Conformity



Profiles



Central incisor



Lateral incisor



Premolar



Molar



Wide molar

Homothetic emergences

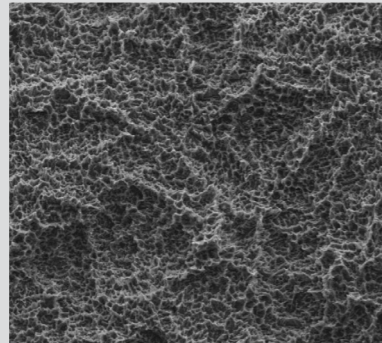
5 standard profiles

- Central incisor
- Lateral incisor
- Premolar
- Molar
- Wide molar

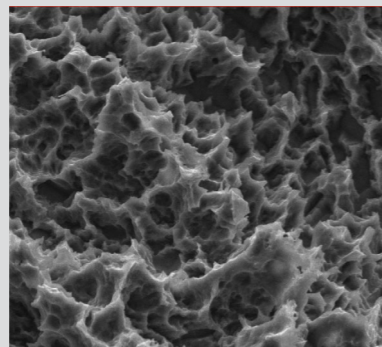
SA² mapping



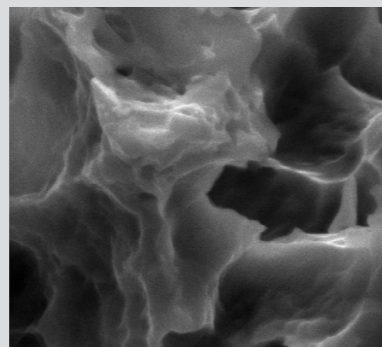
Study of the surface morphology



x 1,000 magnification



x 5,000 magnification



x 30,000 magnification

Specificity

- Concave collar in contact with peri-implant mucosa
- Creation of a mucosal O ring starting from the initial healing phase

Linearity

- Limit of roughened area-smooth area without any sharp angle
- Progressive profile in contact with peri-implant tissues

Stability

- Tapered cylindrical body
- Double thread
- Self-tapping profile
- Atraumatic apex
- SA² roughened surface

Feature

- Type of connection : external taper situated above the concave collar
- Prosthetic handling shift to the top of the mucosal O ring

Closeness

- Single connection for all three diameters
- Accessibility when handled in mouth
- Visibility of the indexation during prosthetic trials

Possibilities

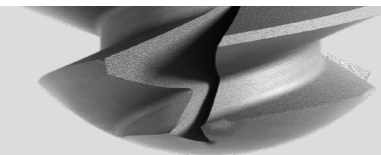
- Can be used in 1 or 2-stage surgery
- Two healing screw profiles: Ø 5 and 6.5 mm
- Screw-retained and cement-retained prosthesis

Conformity

- Homothetic designs
- Asymmetric cervical bound
- Indexed or rotational versions

Profiles

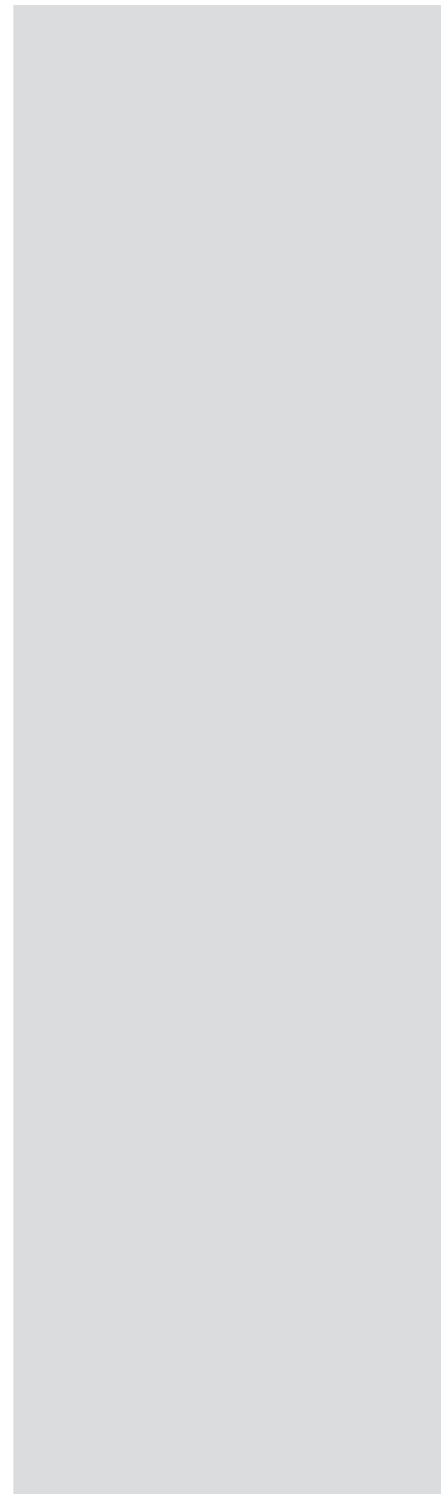
5 standard profiles



Evidence of 10 years' clinical experience

“Over thirteen years ago I had the honour of being part of the team testing the twinKon® implant, with over three thousand implants inserted under widely varying clinical conditions. With this clinical experience, I see today across all my cases, results that are surprisingly consistent and reproducible with regard to peri-implant tissue management. The bone level remains stable with almost systematic corticalisation of the bone tables on X-rays. As for the gingival seating surrounding the restoration, this regularly has a completely healthy appearance with full contours and even shapes. As far as I am concerned, I have yet to see such stable results with more “conventional” implant systems. In my opinion, the twinKon® is an implant that deserves particular attention from practitioners concerned about the durability of their implant-supported restorations.”

Dr Jean-Pierre Axiotis



List of Instruments



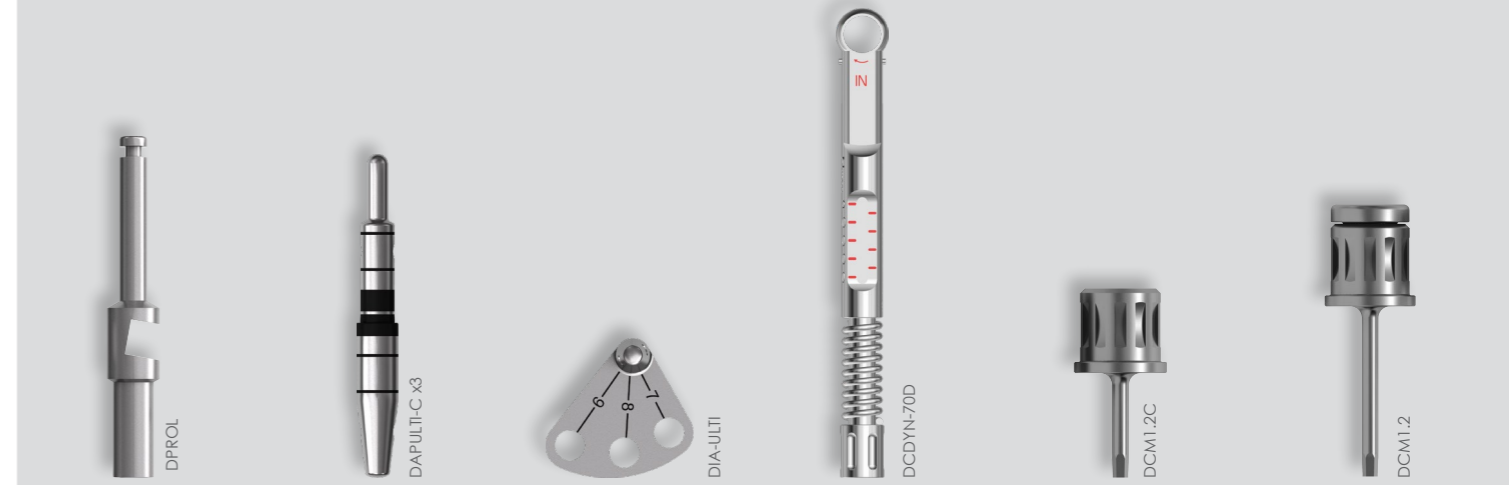
Short drills



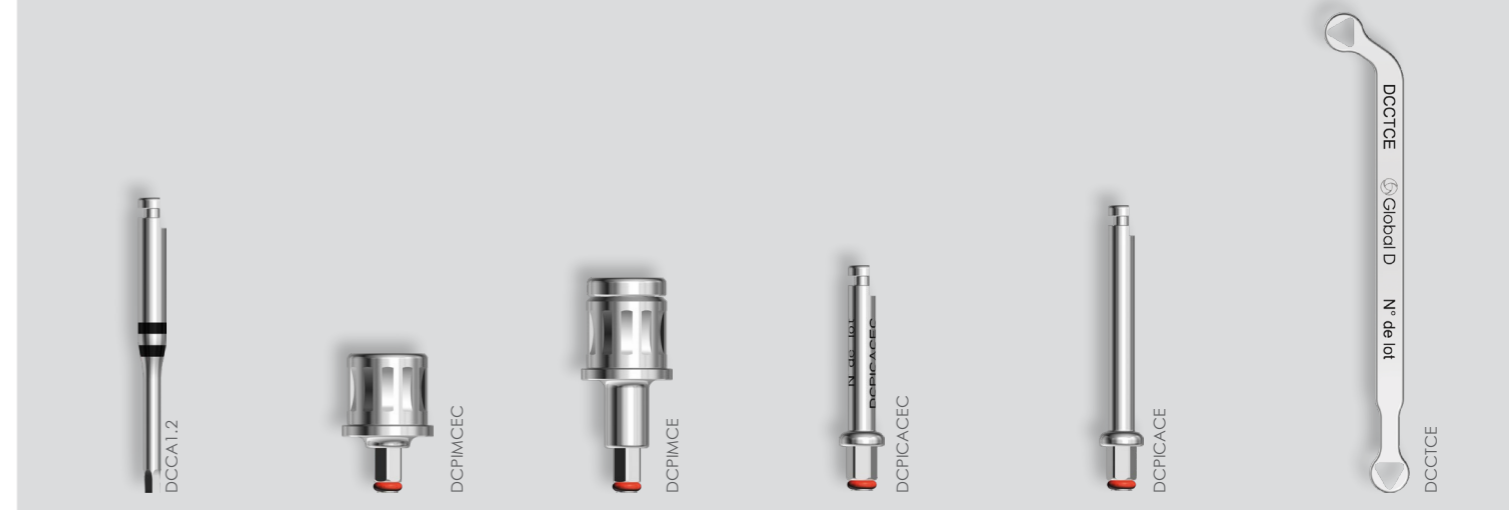
Ø 2.2 mm Ø 2.4 mm Ø 2.7 mm Ø 2.9 mm Ø 3.2 mm Ø 3.4 mm Ø 3.7 mm Ø 3.9 mm Ø 4.2 mm Ø 4.4 mm



Long drills



Drill extension Parallelism and depth indicator Spacing indicator Torque wrench* Short manual hexagonal screwdriver Standard manual hexagonal screwdriver

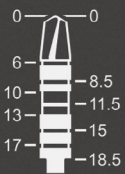


Hexagonal contra-angle wrench twinKon® short manual implant driver twinKon® manual implant driver twinKon® short contra-angle implant driver twinKon® contra-angle implant driver twinKon® counter-torque wrench

[*] *Key manufactured and CE marked by Josef Garnter GmbH. Respect the cleaning, decontamination and sterilization recommendations provided by the manufacturer.

ULTIMATE options

ULTIMATE Drill Stops



DBULTKIT



	L 6 mm	L 7.5 mm	L 8.5 mm	L 10 mm	L 11.5 mm	L 13 mm
Ø 3 mm	DBU3L6	DBU3L7.5	DBU3L8.5	DBU3L10	DBU3L11.5	DBU3L13
Ø 3.5 mm	DBU3.5L6	DBU3.5L7.5	DBU3.5L8.5	DBU3.5L10	DBU3.5L11.5	DBU3.5L13
Ø 4 mm	DBU4L6	DBU4L7.5	DBU4L8.5	DBU4L10	DBU4L11.5	DBU4L13
Ø 4.5 mm	DBU4.5L6	DBU4.5L7.5	DBU4.5L8.5	DBU4.5L10	DBU4.5L11.5	DBU4.5L13

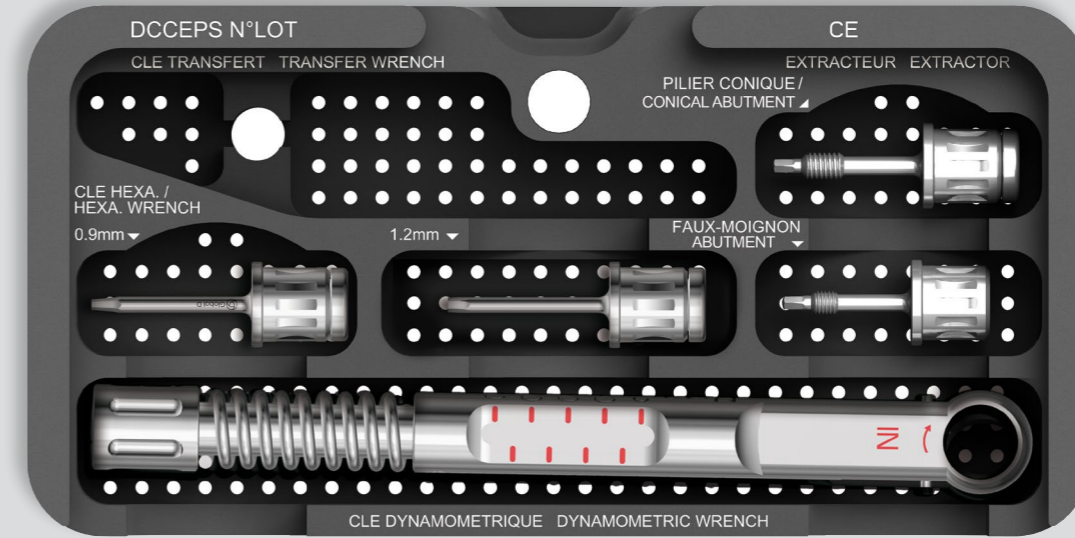
Ø 5 mm depth stops are available for In-Kone®, UNIVERSAL and PRIMO® implants



DBUMICROKIT



Prosthesis instruments



DPCEKIT



(*) *Key manufactured and CE marked by Josef Ganter GmbH. Respect the cleaning, decontamination and sterilization recommendations provided by the manufacturer.

Optional instruments



Short 1.2 mm manual hexagonal screwdriver



Long 1.2 mm manual hexagonal screwdriver



Contra-angle hexagonal screwdriver



Short contra-angle hexagonal screwdriver



Long manual wrench for impression coping



Manual adaptor for contra-angle end*



twiKon® long abutment extractor and Ø4.3 mm conical abutment



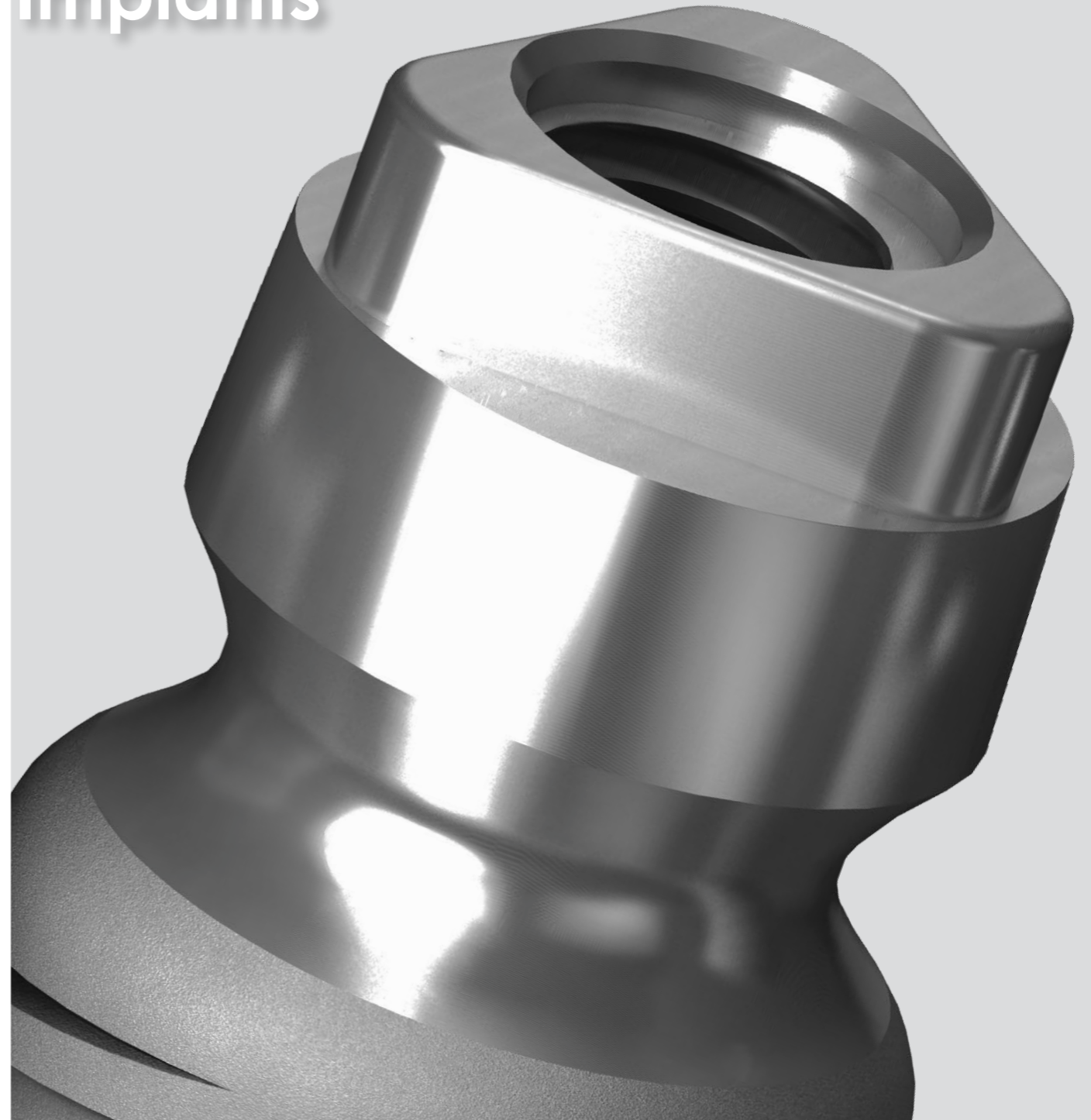
twiKon® short manual hexagonal screwdriver, Ø 0.9 mm



twiKon® manual Ø4.3 mm conical abutment activator

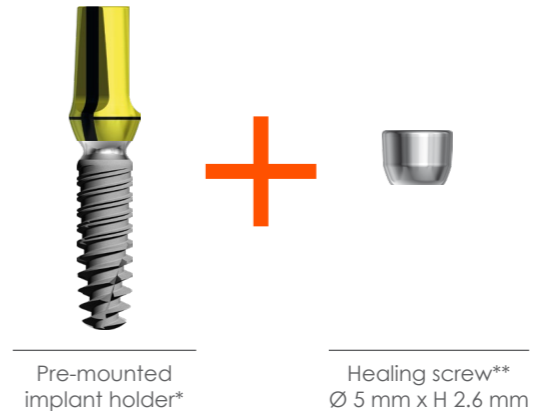
(*) *Key manufactured and CE marked by Josef Gantner GmbH. Respect the cleaning, decontamination and sterilization recommendations provided by the manufacturer.

Implants





Sterile packaging



(*) Implant holder that enables to preview the prosthetic axis before the insertion of implant. Do not use the implant holder as a temporary component.

Healing screws



DCCTWK

Cover cap



DVCTWKSH2.6**

Screw Ø 5 mm
H 2.6 mm*



DVCTWKSH4**

Screw Ø 5 mm
H 4 mm



DVCTWK6.5H2.6

Screw Ø 6.5 mm
H 2.6 mm



DVCTWK6.5H4

Screw Ø 6.5 mm
H 4 mm

* Included in the packaging

Screwdrivers



DCM0.9C

twinKon®
short manual
hexagonal
screwdriver,
Ø 0.9 mm



DCM0.9

twinKon®
standard manual
hexagonal
screwdriver,
Ø 0.9 mm



DCM1.2C

Short
1.2 mm manual
hexagonal
screwdriver



DCM1.2

Standard
1.2 mm manual
hexagonal
screwdriver



DCM1.2L

Long
1.2 mm manual
hexagonal
screwdriver

Tightening torque: Manual or 10 N.cm when using torque wrench

(!) Healing screws are delivered non sterile, please read the instruction for use for the cleaning and sterilization process.

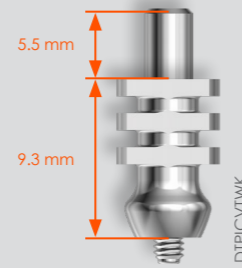
List of components

twinKon®

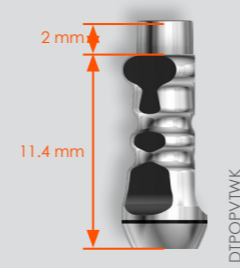


Direct impressions for implants

Impression copings

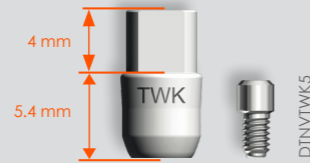


Pick-up impression coping



Pop-up impression coping

Titanium scan bodies



Titanium scan body Ø5 mm



Titanium scan body Ø6.5 mm

Screwdrivers



Manual hexagonal screwdrivers DCM1.2 standard
Vissage manuel



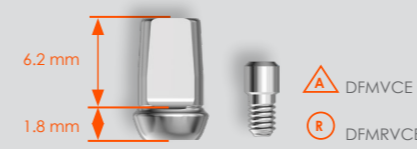
Screwdrivers DCPOPC /-L
Vissage manuel



Implant analog

Cemented prosthesis

Standard abutments



Straight Ø5 mm



Angled 7.5° Ø5.3 mm



Angled 15° Ø5.4 mm

Full abutments



Straight Ø5 mm



Straight Ø6.5 mm



twinKon Pre-milled S3DEL

Screwdrivers



Short 1.2 mm manual hexagonal screwdriver

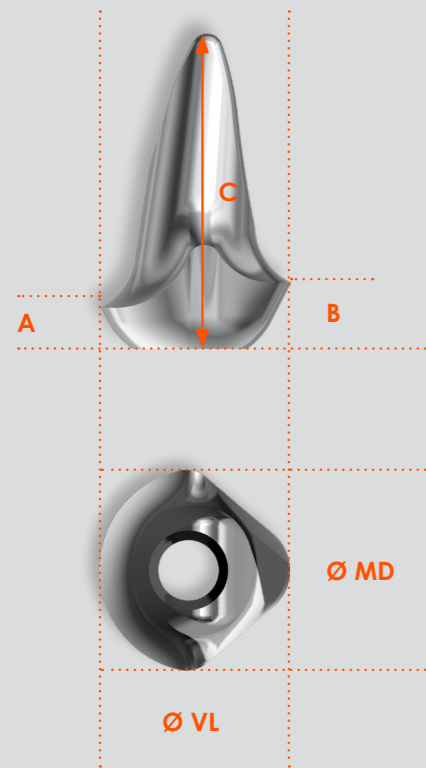
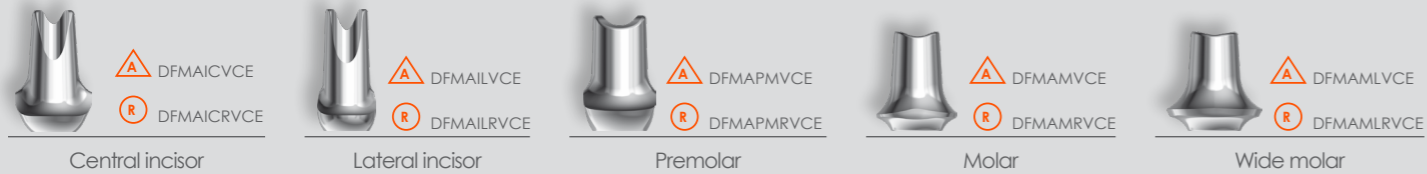


Standard 1.2 mm manual hexagonal screwdriver



Long 1.2 mm manual hexagonal screwdriver

Anatomical abutments



(mm)	C	Ø Mesiodistal MD	Ø Vestibulo-lingual VL	A	B
Central incisor	10	6.3	6	1.3	2.1
Lateral incisor	10	4.8	5	1.3	2.1
Premolar	8	5	6	1.4	1.7
Molar	8	6	6.5	1.3	1.4
Wide molar	8	7	7.5	1.7	1.7

A: Vestibular height
 B: Lingual/palatal height
 C: Total height

Screwdrivers

Manual hexagonal screwdrivers
 DCM1.2 /C/L

Tightening torque: 20 N.cm

Cemented prosthesis on short abutment



* Implantation less than 30 days



Screwdrivers

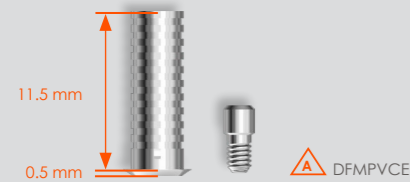
Manual hexagonal screwdrivers
 DCM0.9/C

Tightening torque: 10 N.cm

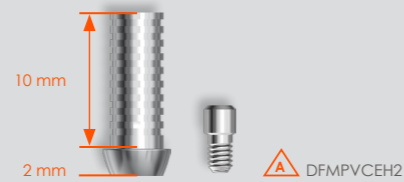


Single screw-retained prosthesis

Temporary abutments

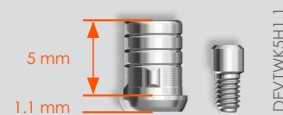


Temporary abutment
Ø5 mm

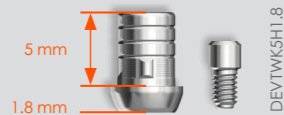


Temporary abutment
Ø5 mm H 2 mm

Bases



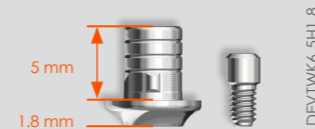
Base
Ø 5 mm H 1.1



Base
Ø 5 mm H 1.8



Base
Ø 6.5 mm H 1.1



Base
Ø 6.5 mm H 1.8

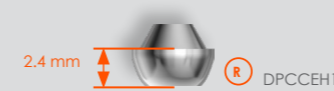
Screwdrivers

Manual hexagonal screwdrivers
DCM1.2 /C/L

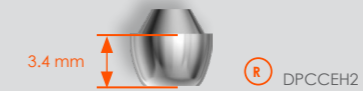
Tightening torque: 20 N.cm

Multiple screw-retained prosthesis

Ø 5.4 mm conical abutment and associated prosthetic components



Conical abutment
Ø 5.4 mm H 2.4 mm*



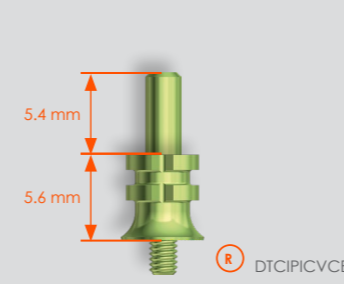
Conical abutment
Ø 5.4 mm H 3.4 mm*



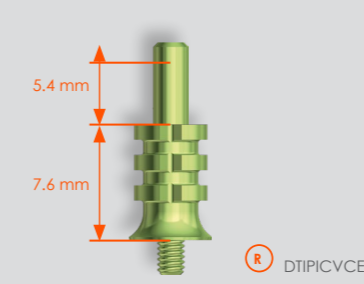
Protective cap
Ø 5.4 mm H 2.5 mm

Tightening torque: 15 N.cm

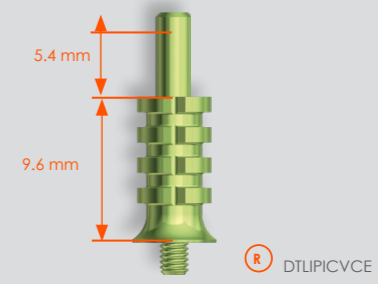
* The conical abutment is embedded on the external tapered part by friction and screwed into the implant using the prosthesis fixing screw.



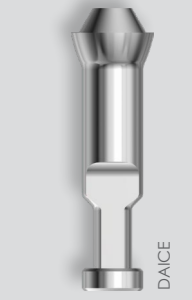
Short impression coping for
conical abutment
H 5.6 mm



Long impression coping for
conical abutment
H 7.6 mm



Extra-long impression coping for
conical abutment
H 9.6 mm

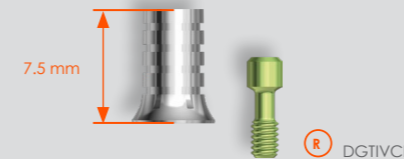


Conical abutment
analog

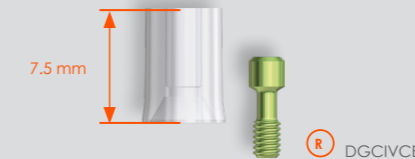
Screwdrivers

Manual hexagonal screwdrivers
DCM1.2 /C/L

Tightening torque: 20 N.cm



Titanium abutment



Burnable abutment



Hybrid abutment

Screwdrivers

Manual hexagonal
screwdrivers DCM1.2 /C/L

Tightening torque: 20 N.cm

DPEPCCE

conical abutment extractor
twinKon® Ø 5.4 mm

Multiple screw-retained prosthesis

Ø 4.3 mm conical abutment and associated prosthetic components

- This conical abutment is mainly recommended for mandibular immediate loading due to its height
- Recommended position of the implant: up to the limit of the implant holder
- Digitally compatible



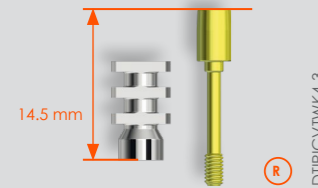
twinKon® conical abutment
Ø 4.3 mm H 2.9 mm

⌚ **Tightening torque: between 20 and 35 N.cm with the correct activator**



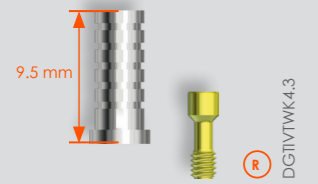
Protective cap
Ø 4.3 mm H 3 mm

⌚ **Manual tightening**



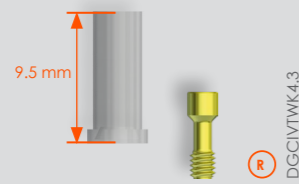
Impression coping for conical abutment Ø 4.3 mm + screw

⌚ **Manual tightening**

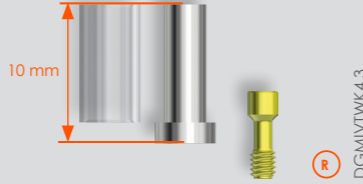


Titanium abutment

⌚ **Tightening torque: 20 N.cm**



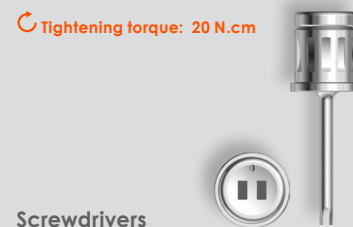
Burnable abutment



Hybrid abutment



twinkon® 4.3 conical abutment base + screw



Screwdrivers

Manual hexagonal screwdrivers
DCM1.2 /C/L

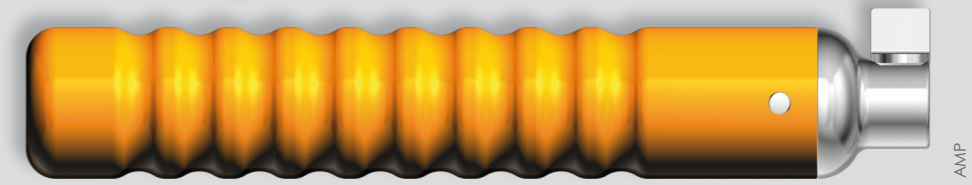


Manual activator for conical abutment Ø4.3 twinkon®



Extractor for abutment and conical abutment Ø4.3 twinkon®

Laboratory essentials



Grinding handle



Screw for pick-up impression coping



Short screw for pick-up impression coping (conical abutment Ø5.4)



Standard screw for pick-up impression coping (conical abutment Ø5.4)



Extra-long screw for pick-up impression coping (conical abutment Ø5.4)



Screw for pick-up impression coping twinkon® Ø4.3



Screw for burnable, titanium and hybrid abutment (conical abutment)



Screw for conical abutment Ø4.3 twinkon®



Standard screw for abutment, 1.2 mm hexagon



Small-head screw for short abutment, 0.9 mm hexagon (tighten manually, 10 N.cm maximum)



Guide screw for titanium abutment



Guide screw for conical abutment Ø5.4



Laboratory screws for conical abutment Ø4.3 twinkon® (pack of 8)



Guide screws for conical abutment Ø4.3 twinkon® (pack of 8)

www.globald.com

The products shown are Class I, IIa and IIb Medical Devices and as such bear the CE mark in compliance with Directive 93/42/EEC.

In France, these devices are not subject to the social security reimbursement scheme.

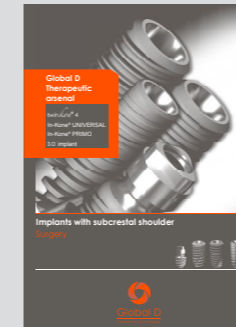
The medical devices shown may not be available for sale in all countries. If you require any further information please contact the Global D sales department.

Please read the user instructions before use. If in doubt, please contact the Global D sales department.

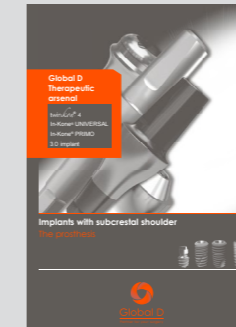
In some cases the user instructions may not be provided in printed form. In this case a QR code and a URL link are given on the label of the device.

The instructions can however be obtained on request and at no additional cost and will be sent to you within 7 days. Send your request to the following address: quality@globald.com.

The clinical images shown in Global D documents are not legally binding. They are provided for illustrative purposes only. The quality of the clinical results depends on the treatment plan and the general and dental health of the patient.



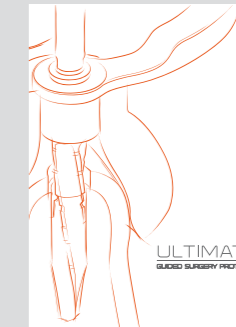
Implants with sub-crestal shoulder Surgery



Implants with sub-crestal shoulder Prosthesis



Digital solutions



Ultimate Guided surgery protocol



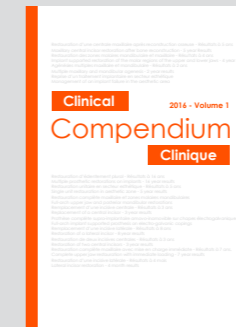
In-Kone® Surgical manual



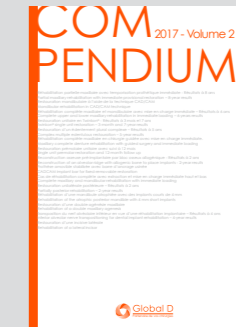
twinKon® Surgical manual



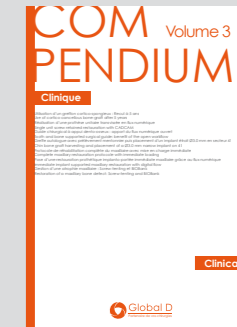
twinKon® 4 Surgical Manual Advanced Surgery



Compendium Vol.1



Compendium Vol.2



Compendium Vol.3

