



Global D Therapeutic Arsenal

EVL® S
EVL® K

Implants with supracrestal shoulder
Surgery





Partner for your surgery

Global D is a French company which specialises in the design, manufacture and supply of **high quality medical devices** for maxillofacial and pre-implant surgery, orthodontics and dental implantology.

We are passionate about what we do and foster **close relationships** with our customers. In addition to our products, which we develop in close collaboration with experienced surgeons, we support all our users in developing their skills. With this in mind, we have set up a large network of colleagues and offer a variety of events, meetings and training courses to give our customers the opportunity to **share their knowledge**.

We also make every effort to ensure the **professionalism** and **expertise of our teams**, who are responsible for providing advice and services to the surgeons who use our products.

Backed by the excellent synergies between our areas of activity, we provide high added value in terms of expertise and **innovation potential** in the field of bone surgery devoted to facial harmony and an attractive smile.



Global D Therapeutic Arsenal Implants with supracrestal shoulder

Surgery

Overview of the therapeutic arsenal	p.4
-------------------------------------	-----

Prostheses and healing screws	p.5
-------------------------------	-----

Implants

EVL® S	p.6
EVL® K	p.8

Technical information

The prosthetic connection at the heart of the implantable device	p.10
--	------

Surgery kits

EVL® surgical kit	
• Presentation	p.12
• Drills	p.13
• Kit Contents	p.14

KONIK Kit option	
• Presentation	p.16

Optional instruments	p.17
----------------------	------

Pre-implant surgery

Graftek	p.19
Biobank products	p.20

The products presented are Class I, IIa, IIb Medical Devices and as such carry the CE mark (CE0459) in accordance with Directive 93/42/EEC.

It is possible that the medical devices presented may not be available for sale in all countries. For further information, please contact Global D's sales department.

Please consult the instruction manual before use. In case of doubt, please contact Global D's sales department.

The instruction manuals can in some cases be dematerialised. If this is the case, a QR code and a URL link are present on the device label. The instructions are nevertheless available on request at no extra charge within 7 days. The request must be made at the following address: quality@gobald.com.

Overview of the Global D therapeutic arsenal

Implants with supracrestal shoulder





The EVL® range of implants with smooth supracrestal collar is characterised by the coronal offset of the prosthetic interface.






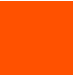

The minimally invasive approach enables the peri-implant biological space to be successfully maintained.

Working on the soft tissue improves visibility and working comfort as well as simplifying the treatment.

Implant performance

	High-density bone	Low-density bone	1-stage surgery	Immediate loading	Immediate implantation	Sinus implantation	Convergent roots
 EVL®S	+++	++	+++	++	+++	++	+
 EVL®K	+	+++	+++	++	+++	+++	+++

Implants and surgical kits

	 EVL® kit	 KONIK kit
 EVL®S		
 EVL®K		 (Along with the EVL® kit)

EVL® S & K prosthesis

EVL® implants have a complete range of common prosthetic components for fixed cement-retained and screw-retained restorations or for stabilising removable prostheses.

The deep internal **hexagonal connection** helps to guide the prosthetic components during insertion. The EVL® range of prostheses is intuitive and easy to use.

(For more information, see our prosthesis catalogue)

Global D has a wide range of implant prostheses in its digital arsenal.

Digital solutions



The laboratory can work on the base for both single and multiple implants. Prosthetists with the appropriate machine can also make customised pillar abutments from pre-milled blanks designed and made by us. In addition, with the Global D Compliance solution, it is possible for prosthetists who comply with our user agreement to go further in making machined frameworks in the laboratory.

(More information: www.globald.com)

Healing screws

Preparation of the prosthetic seating















The healing screw is an essential component in the restoration phase of the EVL® implant system as it marks the prosthetic emergence profile of the future tooth.

The profile of the EVL® healing screws is based directly on the aesthetic ring.* The taper prepares the entrance of the prosthetic seating and shapes a close-fitting, tension-free tissue access to match the profile of the final components.

(* unique, original system for preparing the mucosa for the EVL® implant)

EVL® S and EVL® K system

Optional healing screws

Implant H	Ø 3.3 mm	Ø 4 mm	Ø 5 mm
0.4 mm	 DVCEVL3.3-0	 DVCEVL4-0	 DVCEVL5-0
1.8 mm	 DVCEVL3.3-STD	 DVCEVL4-STD	 DVCEVL5-STD
3.0 mm	 DVCEVL3.3-3	 DVCEVL4-3	 DVCEVL5-3
4.5 mm	 DVCEVL3.3-4.5	 DVCEVL4-4.5	 DVCEVL5-4.5

Each implant is supplied with a 1.8 mm-high healing screw, other screws are available as an option. The latter are supplied sterile. 0.4 mm-high healing screws are cover screws.

EVL® S implant

Presentation

Smooth collar: height 1.2 mm

Connection: internal hexagon

Surface finish: sandblasted

Design: cylindrical

Materials:

- EVL® S 3.3 titanium according to ISO 5832-3 (ASTM grade 5)
- EVL® S 4 and 5 titanium according to ISO 5832-2 (ASTM grade 4)

Indications:

- 1-stage surgery
- 2-stage surgery

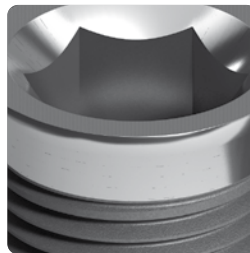


In general, the EVL® range of implants is designed to facilitate working in the mouth and the management of the biological area over time. The implant surface finish is sandblasted. This rough surface is achieved using an automated sandblasting process with high-purity alumina particles.

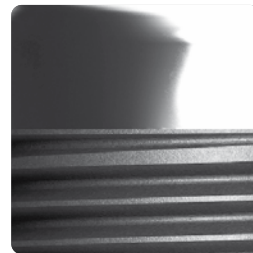
The internal hexagonal connection and recommended supracrestal positioning of the implants facilitate visibility and accessibility during the various phases of the operations. The implants have a smooth collar which promotes stabilisation of the peri-implant mucosal-conjunctive band right from the moment of insertion.

The EVL® S is characterised by its considerable versatility. The implant body is made up of asymmetrical "artillery-type" macro-threads which ensure its primary stability and preserve the bone. Its cylindrical shape makes the insertion protocol easily reproducible whatever the bone density.

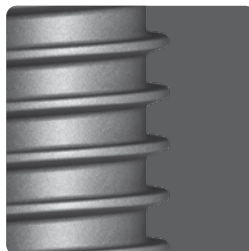
EVL® implants have the benefit of over 20 years' clinical experience.



Deep internal hexagon connection



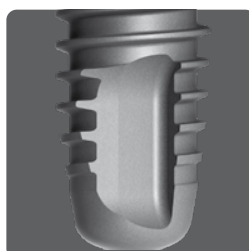
Smooth supracrestal collar height 1.2 mm



Regular "artillery-type" thread



Versatile cylindrical shape

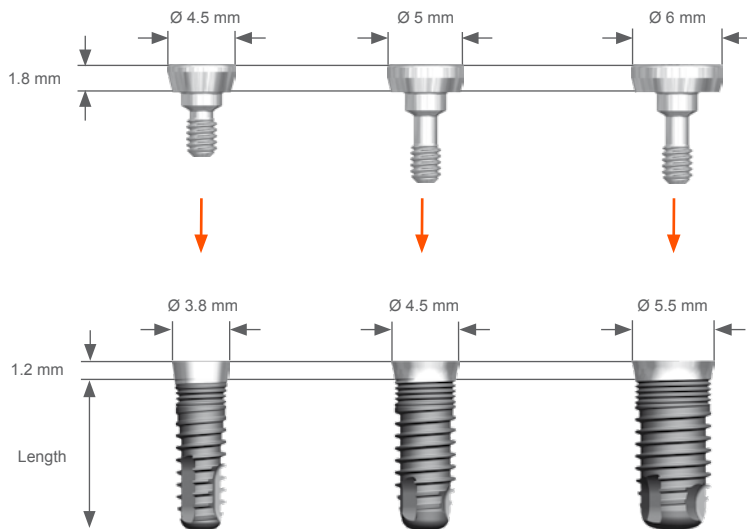


Atraumatic apex



Tension-free mucosal signature

Table of references



L \ Ø	Ø 3.3 mm	Ø 4 mm	Ø 5 mm
7 mm	/	DPEVLS4-7	DPEVLS5-7
8 mm	DPEVLS3.3-8	DPEVLS4-8	DPEVLS5-8
10 mm	DPEVLS3.3-10	DPEVLS4-10	DPEVLS5-10
12 mm	DPEVLS3.3-12	DPEVLS4-12	DPEVLS5-12
14 mm	DPEVLS3.3-14	DPEVLS4-14	/

Packaging

- Single package, sterile blister
- Supplied with disposable final drill
- Supplied with a healing screw (height 1.8 mm) on driver
- Direct pick-up without intermediate implant holder



EVL® surgical kit

The EVL® surgical kit can be used to insert all the implants in the EVL® range. It contains the initial and intermediate drills as well as all the depth stops specific to each drill diameter. These are arranged in a removable container enabling direct contra-angle pick-up.

(More information p. 18-19)



Implant EVL® K

Presentation

Smooth collar: height 0.9 mm

Connection: internal hexagon

Surface finish: sandblasted

Design: cylindrical-conical

Material:

EVL® K: titanium according to ISO 5832-3 (ASTM grade 5)

Indications:

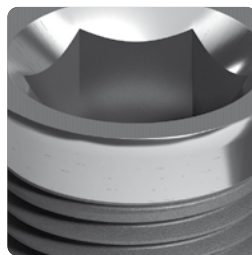
- 1-stage surgery
- 2-stage surgery



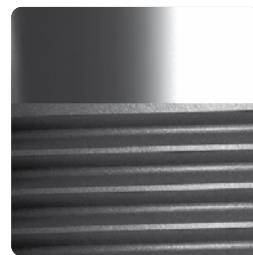
In general, the EVL® range of implants is designed to facilitate working in the mouth and the management of the biological area over time. The implant surface finish is sandblasted. This rough surface is achieved using an automated sandblasting process with high-purity alumina particles.

The internal hexagonal connection and recommended supracrestal positioning of the implants facilitate visibility and accessibility during the various phases of the operations. The implants have a smooth collar which promotes stabilisation of the peri-implant mucosal-conjunctive band right from the moment of insertion.

The EVL® K is a root-shaped implant which can be used in all situations. To increase implant stabilisation and improve bone anchorage, the thread depth has been made variable and is highly progressive above the apical area. It is particularly recommended for use in low-density bone and implantation in interdental spaces with convergent roots.



Deep internal hexagon connection



Smooth supracrestal collar height 0.9 mm



Progressive "artillery-type" thread



Root-shaped anatomical shape

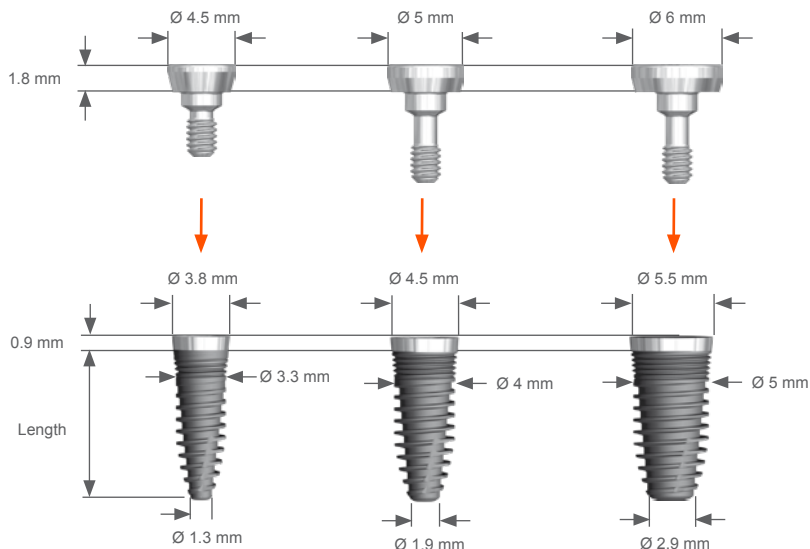


Deep vent



Tension-free mucosal signature

Table of references



L \ Ø	Ø 3.3 mm	Ø 4 mm	Ø 5 mm
8 mm	/	DPEVLK4-8	DPEVLK5-8
10 mm	DPEVLK3.3-10	DPEVLK4-10	DPEVLK5-10
12 mm	DPEVLK3.3-12	DPEVLK4-12	DPEVLK5-12
14 mm	DPEVLK3.3-14	DPEVLK4-14	/

Packaging

- Single package, sterile blister
- Supplied with disposable final drill
- Supplied with a healing screw (height 1.8 mm) on driver
- Direct pick-up without intermediate implant holder



EVL® surgical kit

The **EVL® surgical kit** can be used to insert all the implants in the EVL® range. It contains the initial and intermediate drills as well as all the depth stops specific to each drill diameter. These are arranged in a removable container enabling direct contra-angle pick-up.

(More information p. 18-19)



KONIK kit

The additional **KONIK kit** is optional. It offers a surgical protocol which is made up entirely of tapered drills adjusted to the different implant lengths. The drilling sequence is progressive and homogeneous, enabling bone preparation to be over- or under-sized while remaining homothetic to the shape of the implant.

(More information p. 20)



The prosthetic connection at the heart of the implantable device

Mechanical and antibacterial performance

The quality of the implant-prosthesis joint is a key factor for the long-term clinical success of implant-supported restorations. In industrial terms, the mechanical and antibacterial performance of the interface is closely linked to the **precise fit** between the male and female parts and also the **control of their surface conditions**.



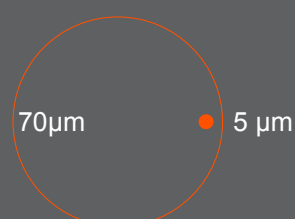
Industrial know-how and medical devices

Design, mechanical tests, clinical validation, manufacture, inspection, recording, traceability, EC marking, storage, supply and monitoring of marketing,...

Global D has technical facilities which are exclusively designed and customised for the manufacture of dental implants and prosthesis equipment.

Our teams of experienced technicians are specially trained in machining medical components. 100% of the components produced are burr-free. The control and precision of the cutting conditions enable us to produce repeatable surface conditions at the implant connections.

The connections undergo continuous stringent inspection directly on the production lines. The batches are then passed to the inspection department which validates all the critical dimensions. This department has high-tech facilities enabling it to work to an accuracy of around ± 5 microns at the connection (the average thickness of a human hair is 70 microns). A record of each inspection is kept for the lifetime of the product.



Global D: partner for your success

EVL[®]: over 25 years' of clinical experience

Dedicated designers

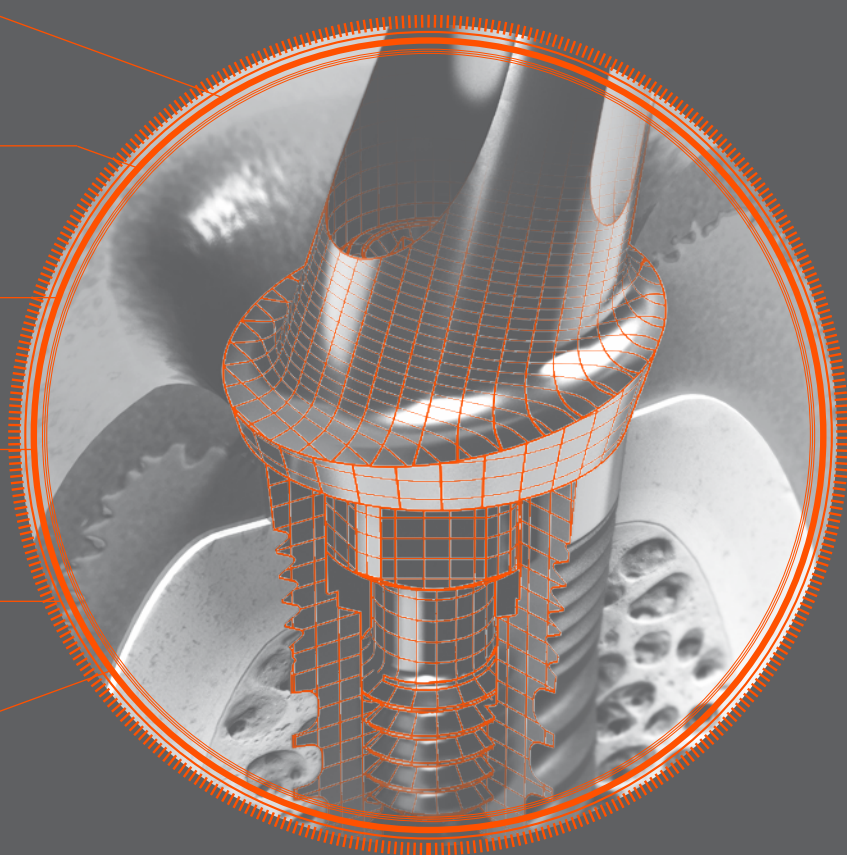
An experienced technical team

Dedicated industrial facilities

Tested assembly

Inspected components

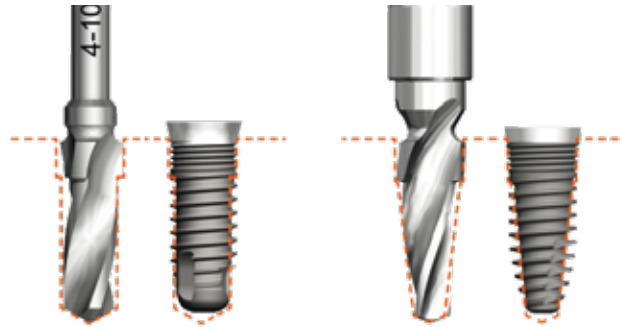
Traceability



EVL®

Surgical kit

Presentation



The EVL® is both **compact and ergonomic**. It contains the instruments for the initial and intermediate drilling sequences for inserting EVL® K and EVL® S implants.

Final drilling is carried out using the **disposable final drill supplied with the implant**. The diameter and length of the final drill are directly adjusted to the format of the implant, making it easier to read the final drilling.

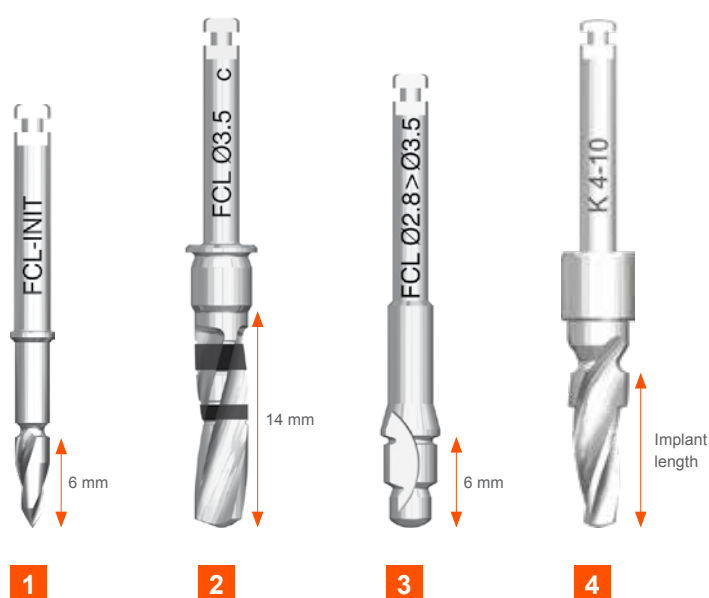
The instruments are arranged on an **easy-clean removable tray**. The kit also contains the **drilling depth stops** which come in a removable container enabling direct contra-angle pick-up.



Drills

4 types of drills:

- 1 Initial drills for starting off the insertion position
- 2 Graduated intermediate drills with removable depth stop to gauge the depth
- 3 Pilot drills to prepare cortical drilling for the following drill and preserve the insert axis
- 4 Disposable final drills supplied with the implant, sized according to the diameter and length of the implant.



The cutting angle of the edges is designed to give the practitioner **constant, suction-free control of the progress** of the drill in the bone. The open point angle of the final drills reduces apical over-drilling and thus the invasiveness of the osteotomy.

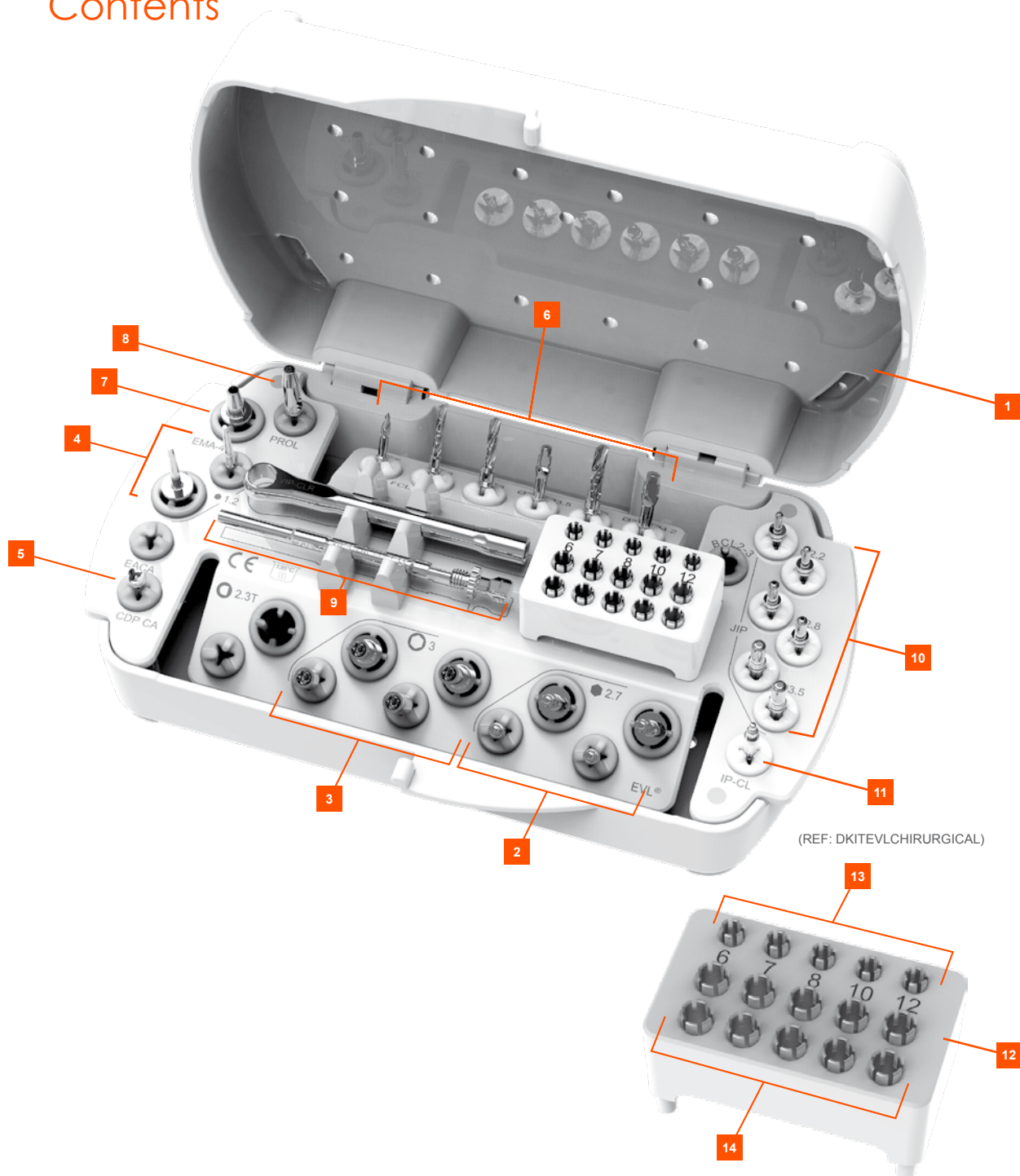
The 3 lips give the drill **stability at the start of drilling**. The standard incrementation of the diameters from 0.5 mm to 0.7 mm provides adjustable progressive preparation according to the bone type.

The helical grooves and the escape angle of the drills facilitate the **removal of bone shavings**, whatever the bone density.

EVL®




Surgical kit

Contents



Over-sized drills available as an option (not included in the kit), available as a kit, ref: DKITFSC

If a few threads remain visible and the max. insertion torque of 70 N.cm has been exceeded, it is advisable to remove the implant and replace it in its original tube before enlarging the cavity with an over-sized drill.

DFEVL2.95		Ø 2.95 over-sized drill for EVL Ø 3.3 implant
DFEVL3.65		Ø 3.65 over-sized drill for EVL Ø 4 implant
DFEVL4.65		Ø 4.65 over-sized drill for EVL Ø 5 implant

1	DKITEVLCHIRURGVIDE	Box with no instruments
2	DCA2.7PLUSC	2.7 mm implant driver, short - contra-angle (EVL [®] K & EVL [®] S)
	DCA2.7PLUSXC	2.7 mm implant driver, extra short - contra-angle (EVL [®] K & EVL [®] S)
	DCM2.7PLUS	2.7 mm implant driver, long - manual/ratchet (EVL [®] K & EVL [®] S)
	DCM2.7PLUSC	2.7 mm implant driver, short - manual/ratchet (EVL [®] K & EVL [®] S)
3	DCPCA	3 mm driver, short - contra-angle
	DCPMA	3 mm driver, medium - contra-angle
	DCPCM	3 mm driver, short - manual/ratchet
	DCPMM	3 mm driver, medium - manual/ratchet
4	DCAB1.2H	1.2 mm driver, medium - contra-angle
	DCM1.2H	1.2 mm driver, medium - manual/ratchet
5	DCDP-CA	Wrench for unscrewing implant driver
6	DFCL-INIT	Ø1.5 to Ø2.2 tapered initial drill, short
	DFCL22	Ø2.2 drill, short (EVL [®] 3.3 intermediate)
	DFCL28	Ø2.8 drill, short (EVL [®] 4 intermediate)
	DFCL28-35-PILOT	Pilot drill for Ø2.8 to Ø3.5
	DFCL35	Ø3.5 drill, short (EVL [®] 5 intermediate)
	DFCL35-42-PILOT	Pilot drill for Ø3.5 to Ø4.2
7	DEMA-4*	Manual/ratchet adaptor for contra-angle instrument
8	DPROL	Contra-angle drill extender
9	DVIP-CLM	Internal mechanism for ratchet or torque wrench unit
	DVIP-CLR	Ratchet wrench unit
10	DJIP22	Ø2.2 parallelism gauge and indicator
	DJIP28	Ø2.8 parallelism gauge and indicator
	DJIP35	Ø3.5 parallelism gauge and indicator
11	DIP-CL	Parallelism indicator for implant

DKITBCLEVL set of depth stops with container:

12	DSUPPORTBCLEVL	Drilling depth stop container for EVL [®] surgical box
13	DBCL1-6	6 mm drilling depth stop for Ø2.2 drill
	DBCL1-7	7 mm drilling depth stop for Ø2.2 drill
	DBCL1-8	8 mm drilling depth stop for Ø2.2 drill
	DBCL1-10	10 mm drilling depth stop for Ø2.2 drill
	DBCL1-12	12 mm drilling depth stop for Ø2.2 drill
14	DBCL2-6 (2x)	6 mm drilling depth stop for Ø2.8 and Ø3.5 drills
	DBCL2-7 (2x)	7 mm drilling depth stop for Ø2.8 and Ø3.5 drills
	DBCL2-8 (2x)	8 mm drilling depth stop for Ø2.8 and Ø3.5 drills
	DBCL2-10 (2x)	10 mm drilling depth stop for Ø2.8 and Ø3.5 drills
	DBCL2-12 (2x)	12 mm drilling depth stop for Ø2.8 and Ø3.5 drills

* Max. torque of 40 N.cm, do not use for implant insertion

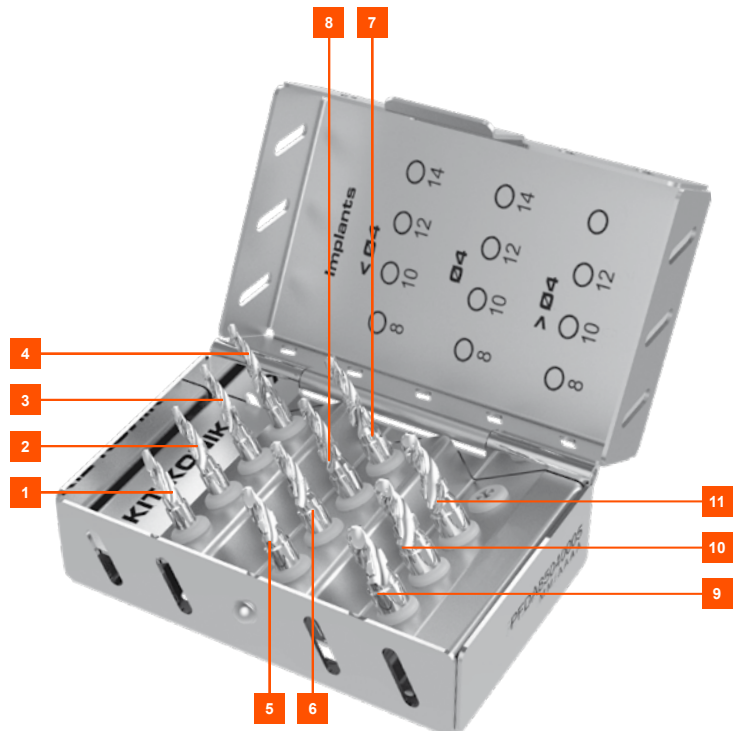
KONIK kit option

Presentation

The **Konik KIT** is a protocol option for EVL® K implants. Used in conjunction with the EVL® surgical kit, the KONIK Kit offers a range of reusable drills sized to the length and diameter of each implant format.

This option enables practitioners to carry out complete drilling sequences using tapered drills. The incrementation of the osteotomy is thus homogeneous as the reaming progresses.

The over or under-sizing of the implant shaft according to the bone density is totally homothetic to the EVL® K implant. The primary stability is uniformly distributed over the endosseous surface of the implant.



(REF: DKITKONIK)




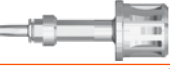

Kit contents

1	DFK-27-080	1	Tapered drill Ø2.7 L 8
2	DFK-27-100	1	Tapered drill Ø2.7 L 10
3	DFK-27-120	1	Tapered drill Ø2.7 L 12
4	DFK-27-140	1	Tapered drill Ø2.7 L 14
5	DFK-33-080	1	Tapered drill Ø3.3 L 8
6	DFK-33-100	1	Tapered drill Ø3.3 L 10
7	DFK-33-120	1	Tapered drill Ø3.3 L 12
8	DFK-33-140	1	Tapered drill Ø3.3 L 14
9	DFK-43-080	1	Tapered drill Ø4.3 L 8
10	DFK-43-100	1	Tapered drill Ø4.3 L 10
11	DFK-43-120	1	Tapered drill Ø4.3 L 12







Optional instruments

Reference	Description
-----------	-------------






2.7 mm drivers (to screw EVL® K / EVL® S implants)

DCA2.7PLUSXC 	2.7 mm implant driver, short - contra-angle
DCA2.7PLUSC 	2.7 mm implant driver, medium - contra-angle
DCA2.7PLUS 	2.7 mm implant driver, long - contra-angle
DCM2.7PLUSC 	2.7 mm implant driver, short - manual/ratchet
DCM2.7PLUS 	2.7 mm implant driver, medium - manual/ratchet




3 mm drivers (to screw EVL® C implants and MULTI E/ BALL/ FMV / FMEVL prostheses)

DCPCA 	3 mm implant driver, short - contra-angle
DCPMA 	3 mm implant driver, medium - contra-angle
DCPLA 	3 mm implant driver, long - contra-angle
DCPCM 	3 mm implant driver, short - manual/ratchet
DCPMM 	3 mm implant driver, medium - manual/ratchet
DCPLM 	3 mm implant driver, long - manual/ratchet

1.2 mm drivers (to screw healing/impression coping/prosthesis screws)

DCAB1.2HC 	1.2 mm driver, short - contra-angle
DCAB1.2H 	1.2 mm driver, medium - contra-angle
DCAB1.2HL 	1.2 mm driver, long - contra-angle
DCM1.2HC 	1.2 mm driver, short - manual/ratchet
DCM1.2H 	1.2 mm driver, medium - manual/ratchet
DCM1.2HL 	1.2 mm driver, long - manual/ratchet

Kit of 3 optional reusable depth stops for final drills





  	Final drill /Tapered drill		Reference
		Ø2.7	DBEVL3.3
		Ø3.3	DBEVL4
		Ø4.3	DBEVL5

Note: the images of the instruments on this page are actual size.





Optional instruments

Reference	Description
-----------	-------------




Manual drivers

DVIP-CLR KIT		Ratchet wrench
DVIP-CL DYN KIT		Ratchet torque wrench
DEMA-4 *		Manual/ratchet adaptor for contra-angle instrument
DCDYN-70D**		Manual torque wrench


Long drills

DFCL-INIT-L		Ø 0 to Ø 2.2 tapered initial drill, long
DFCL22L		Ø 2.2 intermediate drill, long
DFCL28L		Ø 2.8 intermediate drill, long
DFCL35L		Ø 3.5 intermediate drill, long

Optional over-sized drills (very high-density bone)

DFEVL2.95		Ø 2.95 over-sized drill for Ø 3.3 EVL® implant
DFEVL3.65		Ø 3.65 over-sized drill for Ø 4 EVL® implant
DFEVL4.65		Ø 4.65 over-sized drill for Ø 5 EVL® implant
DKITFSC		Over-sized drill kit

Kit containing 3 drills

 Ref: DDRILLKIT	Sterile drilling kit	References
	Ø1.5 mm	DJPBC
	Ø2 mm	DFEVL2
	Ø2.5 mm	DFEVL2.5

* Max. torque 40 N.cm, do not use for inserting implants

Note: the images of the instruments on this page are actual size.

**Torque wrench made and marked C€ by Josef Ganter GmbH. Observe the recommendations for cleaning, decontamination and sterilisation provided by the manufacturer.

GRAFTEK

Global D has a range of screws for pre-implant surgery.

Characteristics:

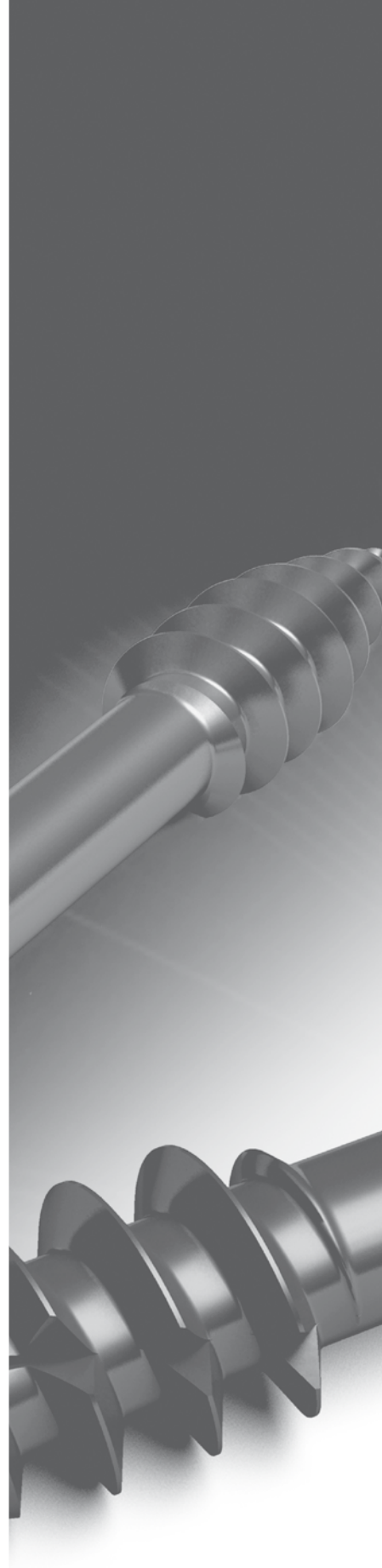
- Self-drilling thread
- Colour code for diameter identification
- Excellent shaft-screw head hold
- Good stability during screwing

Range:

- Self-drilling screws indicated for the application of bone grafts and fixation of membranes and for surgery with immediate loading or with the use of short implants.
- Self-drilling compressions screws indicated for the application of bone grafts.



The whole range and the related ancillary equipment is in our Graftek catalogue.



Biomaterials

BIOBANK



BIOBank is a French tissue bank authorised by the ANSM (French National Agency for the Safety of Medicines and Health Products) for the storage, transformation and distribution of bone grafts.

BIOBank grafts are from human femoral heads (allografts) taken exclusively from living donors during hip arthroplasty. All donations are taken in France by orthopaedic surgeons.

The femoral heads are transformed into virally inactivated and sterile bone grafts by means of the patented Supercrit® process, an exclusive technology based on the use of supercritical CO₂. This process has been granted "process/products" authorisation by the ANSM.



Cancellous bone powder "S" in SYRINGE

- 90035 - Cancellous bone powder "S" 0.5mm - 0.5cc syringe
- 90036 - Cancellous bone powder "S" 0.5mm - 1 cc syringe
- 90037 - Cancellous bone powder "S" 0.5 mm - 2 cc syringe



Cancellous bone powder "S" in VIAL

- 90031 - Cancellous bone powder "S" 0.5 mm - 0.5 cc vial
- 90032 - Cancellous bone powder "S" 0.5 mm - 2 cc vial
- 90033 - Cancellous bone powder "S" 0.5 mm - 2 cc vial
- 90034 - Cancellous bone powder "S" 0.5 mm - 4 cc vial



Cancellous bone powder "L" in VIAL

- 90041 - Cancellous bone powder "L" 1 mm - 0.5 cc vial
- 90042 - Cancellous bone powder "L" 1 mm - 1 cc vial
- 90043 - Cancellous bone powder "L" 1 mm - 2 cc vial
- 90044 - Cancellous bone powder "L" 1 mm - 4 cc vial



Cortico-cancellous bone blocks

- 90065 - Cortico-cancellous bone block 15x10x4mm
- 90066 - Cortico-cancellous bone block 22x12x4mm



Cortical bone plates

- 90063 - Cortical bone plates 12x10 mm
- 90064 - Cortical bone plates 18x10 mm



Cortico-cancellous bone powder - vial

- 90051 - Cortico-cancellous bone powder "S" 0.5mm - 0.5 cc vial
- 90052 - Cortico-cancellous bone powder "S" 0.5mm - 1 cc vial
- 90053 - Cortico-cancellous bone powder "S" 0.5mm - 2 cc vial
- 90054 - Cortico-cancellous bone powder "S" 0.5mm - 4 cc vial



Cortico-cancellous bone powder - syringe

- 90055 - Cortico-cancellous bone powder "S" 0.5mm - 0.5 cc syringe
- 90056 - Cortico-cancellous bone powder "S" 0.5mm - 1 cc syringe
- 90057 - Cortico-cancellous bone powder "S" 0.5mm - 2 cc syringe



- 90012 - Cancellous bone block 20x10x10mm



- BG2030 - BoneGuard membrane 20x30mm

Product references

EVL®S implants

DPEVLS3.3-8	EVL® S	EVL S 3.3-8 implant +Cover screw+drill
DPEVLS3.3-10	EVL® S	EVL S 3.3-10 implant +Cover screw+drill
DPEVLS3.3-12	EVL® S	EVL S 3.3-12 implant +Cover screw+drill
DPEVLS3.3-14	EVL® S	EVL S 3.3-14 implant +Cover screw+drill
DPEVLS4-7	EVL® S	EVL S 4-7 implant +Cover screw+drill
DPEVLS4-8	EVL® S	EVL S 4-8 implant +Cover screw+drill
DPEVLS4-10	EVL® S	EVL S 4-10 implant +Cover screw+drill
DPEVLS4-12	EVL® S	EVL S 4-12 implant +Cover screw+drill
DPEVLS4-14	EVL® S	EVL S 4-14 implant +Cover screw+drill
DPEVLS5-7	EVL® S	EVL S 5-7 implant +Cover screw+drill
DPEVLS5-8	EVL® S	EVL S 5-8 implant +Cover screw+drill
DPEVLS5-10	EVL® S	EVL S 5-10 implant +Cover screw+drill
DPEVLS5-12	EVL® S	EVL S 5-12 implant +Cover screw+drill

EVL®K implants

DPEVLK3.3-10	EVL® KONIK	EVL K 3.3-10 implant +cover screw+drill
DPEVLK3.3-12	EVL® KONIK	EVL K 3.3-12 implant +cover screw+drill
DPEVLK3.3-14	EVL® KONIK	EVL K 3.3-14 implant +cover screw+drill
DPEVLK4-8	EVL® KONIK	EVL K 4-8 implant +cover screw+drill
DPEVLK4-10	EVL® KONIK	EVL K 4-10 implant +cover screw+drill
DPEVLK4-12	EVL® KONIK	EVL K 4-12 implant +cover screw+drill
DPEVLK4-14	EVL® KONIK	EVL K 4-14 implant +cover screw+drill
DPEVLK5-8	EVL® KONIK	EVL K 5-8 implant +cover screw+drill
DPEVLK5-10	EVL® KONIK	EVL K 5-10 implant +cover screw+drill
DPEVLK5-12	EVL® KONIK	EVL K 5-12 implant +cover screw+drill

Healing/cover screws

DVCEVL3.3-0	EVL®	EVL 3.3 Cover screw, height 0.4 mm
DVCEVL3.3-3	EVL®	EVL 3.3 Cover screw, height 3 mm
DVCEVL3.3-4.5	EVL®	EVL 3.3 Cover screw, height 4.5 mm
DVCEVL3.3-STD	EVL®	EVL 3.3 Cover screw, height 1.8 mm
DVCEVL4-0	EVL®	EVL 4 Cover screw, height 0.4 mm
DVCEVL4-3	EVL®	EVL 4 Cover screw, height 3 mm
DVCEVL4-4.5	EVL®	EVL 4 Cover screw, height 4.5 mm
DVCEVL4-STD	EVL®	EVL 4 Cover screw, height 1.8 mm
DVCEVL5-0	EVL®	EVL 5 Cover screw, height 0.4 mm
DVCEVL5-3	EVL®	EVL 5 Cover screw, height 3 mm
DVCEVL5-4.5	EVL®	EVL 5 Cover screw, height 4.5 mm
DVCEVL5-STD	EVL®	EVL 5 Cover screw, height 1.8 mm

Surgical instruments

Cylindrical drills

DFCL-INIT	MULTI GAMME	FCL-INIT initial drill 0->2.2 L28
DFCL-INIT-L	MULTI GAMME	FCL-INIT-L initial drill 0->2.2 L40
DFCL22	MULTI GAMME	FCL22 drill D2.2 L34 with depth stop
DFCL22L	MULTI GAMME	FCL22L drill D2.2 L40 with depth stop
DFCL28	MULTI GAMME	FCL28 drill D2.8 L34 with depth stop
DFCL28-35-PILOT	MULTI GAMME	FCL28-35-PILOT staged drill 2.8->3.5 L30
DFCL28L	MULTI GAMME	FCL28L drill D2.8 L40 with depth stop
DFCL35	MULTI GAMME	FCL35 drill D3.5 L34 with depth stop
DFCL35-42-PILOT	MULTI GAMME	FCL35-42-PILOT staged drill 3.5->4.2 L30
DFCL35L	MULTI GAMME	FCL35L drill D3.5 L40 with depth stop
DFCL42	MULTI GAMME	FCL42 drill D4.2 L34 with depth stop
DFCL42-50-PILOT	MULTI GAMME	FCL42-50-PILOT staged drill 4.2->5.0 L30
DFCL42L	MULTI GAMME	FCL42L drill D4.2 L40 with staged drill

Tapered drills

DFK-27-080	MULTI GAMME	FK-27-080 tapered drill Ø2.7 L 8
DFK-27-100	MULTI GAMME	FK-27-100 tapered drill Ø2.7 L 10
DFK-27-120	MULTI GAMME	FK-27-120 tapered drill Ø2.7 L 12
DFK-27-140	MULTI GAMME	FK-27-140 tapered drill Ø2.7 L 14
DFK-33-080	MULTI GAMME	FK-33-080 tapered drill Ø3.3 L 8
DFK-33-100	MULTI GAMME	FK-33-100 tapered drill Ø3.3 L 10
DFK-33-120	MULTI GAMME	FK-33-120 tapered drill Ø3.3 L 12
DFK-33-140	MULTI GAMME	FK-33-140 tapered drill Ø3.3 L 14
DFK-43-080	MULTI GAMME	FK-43-080 tapered drill Ø4.3 L 8
DFK-43-100	MULTI GAMME	FK-43-100 tapered drill Ø4.3 L 10
DFK-43-120	MULTI GAMME	FK-43-120 tapered drill Ø4.3 L 12

Depth stops

DBCL1-6	MULTI GAMME	BCL1- 6 Internal diameter 2.8, drilling depth 6 mm
DBCL1-7	MULTI GAMME	BCL1- 7 Internal diameter 2.8, drilling depth 7 mm
DBCL1-8	MULTI GAMME	BCL1- 8 Internal diameter 2.8, drilling depth 8 mm
DBCL1-10	MULTI GAMME	BCL1-10 Internal diameter 2.8, drilling depth 10 mm
DBCL1-12	MULTI GAMME	BCL1-12 Internal diameter 2.8, drilling depth 12 mm
DBCL2-6	MULTI GAMME	BCL2- 6 Internal diameter 4, drilling depth 6 mm
DBCL2-7	MULTI GAMME	BCL2- 7 Internal diameter 4, drilling depth 7 mm
DBCL2-8	MULTI GAMME	BCL2- 8 Internal diameter 4, drilling depth 8 mm
DBCL2-10	MULTI GAMME	BCL2-10 Internal diameter 4, drilling depth 10 mm
DBCL2-12	MULTI GAMME	BCL2-12 Internal diameter 4, drilling depth 12 mm
DBCL3-7	MULTI GAMME	BCL3- 7 Internal diameter 4.9 drilling depth 7 mm
DBCL3-8	MULTI GAMME	BCL3- 8 Internal diameter 4.9 drilling depth 8 mm
DBCL3-10	MULTI GAMME	BCL3-10 Internal diameter 4.9 drilling depth 10 mm
DBCL3-12	MULTI GAMME	BCL3-12 Internal diameter 4.9 drilling depth 12 mm

DBEVL3.3	MULTI GAMME	BEVL 3.3 depth stop for final drill
DBEVL4	MULTI GAMME	BEVL 4 depth stop for final drill
DBEVL5	MULTI GAMME	BEVL 5 depth stop for final drill
DKITBEVL	MULTI GAMME	BEVL KIT 3 depth stops for final drills
DKTBCLEVL	MULTIGAMME	EVL BCL KIT Container+ depth stops
Complete kits		
DKITEVLCHIRURGICAL	MULTI GAMME	EVL SURGICAL KIT EVL insertion kit
DKITEVLOSTEO	MULTI GAMME	EVL OSTEO KIT straight osteo insertion kit
DKITFMTAESSAI	EVL®	FMTA TRIAL KIT help with choice of abutment
DKITFSC	MULTI GAMME	FSC KIT
DKITKONIK	EVL® K	KONIK KIT tapered drill kit
DKITPROTHESE	MULTI GAMME	Prosthesis KIT
EVL® manual implant drivers		
DCM2.7PLUS	EVL®	CM2.7PLUS manual implant driver L29.5 X40
DCM2.7PLUSC	EVL®	CM2.7PLUS C manual implant driver L22.5 X40
DCA2.7PLUS	EVL®	CA2.7PLUS contra-angle implant driver X40 L32
DCA2.7PLUSC	EVL®	CA2.7PLUS C contra-angle implant driver X40 L25
DCA2.7PLUSXC	EVL®	CA2.7PLUS XC contra-angle implant driver X40 L17
DCPM-2	MULTI GAMME	CPM-2 manual retentive screwdriver
DCPLA	MULTI GAMME	CPLA hex contra-angle driver 3 long
DCPMA	MULTI GAMME	CPMA hex contra-angle driver 3 medium
DCPCA	MULTI GAMME	CPCA hex contra-angle driver 3 short
Screwdrivers/drivers		
DCPLM	MULTI GAMME	CPLM manual hex driver 3 long
DCPCM	MULTI GAMME	Manual ratchet hex driver 3
DCPMM	MULTI GAMME	CPMM manual hex driver 3 medium
DCM1.2HL	MULTI GAMME	CM1.2HL manual ratchet driver L28.5 X40
DCM1.2H	MULTI GAMME	CM1.2H manual ratchet driver L22.5 X40
DCM1.2HC	MULTI GAMME	CM1.2HC manual ratchet driver L16.5 X40
DCAB1.2HL	MULTI GAMME	CAB1.2HL contra-angle driver with depth stop L36
DCAB1.2H	MULTI GAMME	CAB1.2H contra-angle driver with depth stop L30
DCAB1.2HC	MULTI GAMME	CAB1.2HC contra-angle driver with depth stop L24
DCPM-2	MULTI GAMME	CPM-2 manual retentive screwdriver
DCPLA	MULTI GAMME	CPLA hex contra-angle driver 3 long
DCPMA	MULTI GAMME	CPMA hex contra-angle driver 3 medium
DCPCA	MULTI GAMME	CPCA hex contra-angle driver 3 short
DPM1.6	MULTI GAMME	P M1.6 driver M1.6
DTLOCAT	MULTI GAMME	Universal 3-in-1 screwdriver for LOCATOR® system
DEMA-4	MULTI GAMME	EMA-4 manual driver adaptor
DVIP-CLDYN	MULTI GAMME	VIP-CL DYN torque wrench unit
DVIP-CLDYNKIT	MULTI GAMME	VIP-CL DYN KIT ratchet torque wrench
DVIP-CLM	MULTI GAMME	VIP-CLM ratchet internal mechanism
DVIP-CLR	MULTI GAMME	VIP-CLR ratchet wrench unit
DVIP-CLRKIT	MULTI GAMME	VIP-CLR ratchet wrench kit
Other instruments		
DPROL-C	MULTI GAMME	PROL-C contra-angle extender L=29
DPMD	MULTI GAMME	PMD calliper rule
DJIP22	MULTI GAMME	JIP22 parallelism indicator gauge
DJIP28	MULTI GAMME	JIP28 parallelism indicator gauge
DJIP35	MULTI GAMME	JIP35 parallelism indicator gauge
DJIP42	MULTI GAMME	JIP42 parallelism indicator gauge
DIP2-2.5	MULTI GAMME	IP 2/2.5 parallelism indicator
DDRILLKIT	MULTI GAMME	DRILL KIT sterile drilling kit, 3 instruments.

For the attention of users

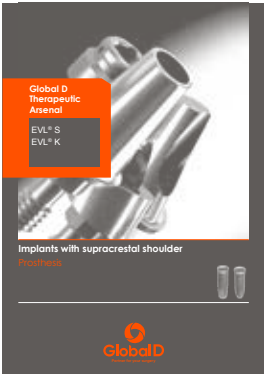
Please follow the instructions for use enclosed with the device. Global D shall not be liable for any failure to comply with its recommendations.

The functionality of the system is only guaranteed if all parts used are original manufactured parts. Any non-certified "copy" from a manufacturer other than Global D invalidates the right to make any claim in the event of any malfunction of the system.

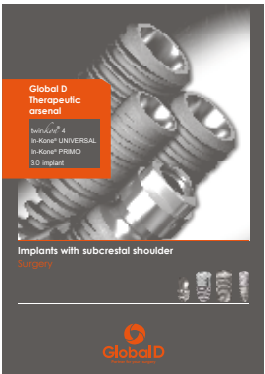
The user must check thoroughly that new or re-used components are in good condition before inserting them in the mouth.

The user is responsible for checking that the ancillary equipment operates correctly before each surgery. It is the user's responsibility to maintain and sterilise all equipment in accordance with usual practice and the applicable regulations. The user is also responsible for replacing re-usable instruments considered to be defective or unsuitable for correct use of the equipment.

Global D therapeutic arsenal



Implants with supracrestal shoulder Prosthesis



Implants with infracrestal shoulder Surgery



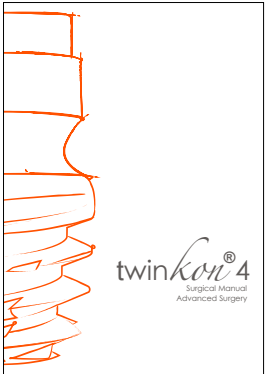
Implants with infracrestal shoulder Prosthesis



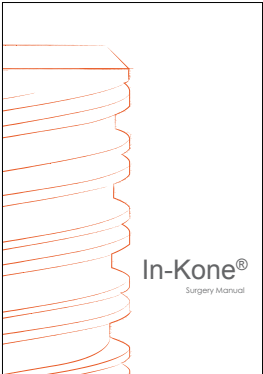
twinkon® Biological signature



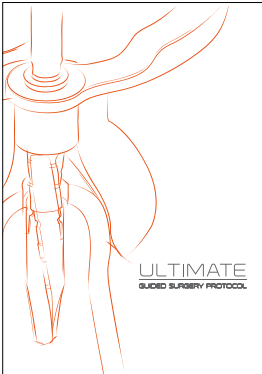
twinkon® Surgery manual



twinkon® 4 Surgery manual



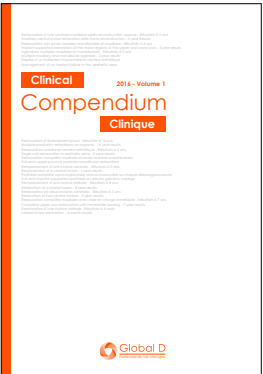
In-Kone® Surgery manual



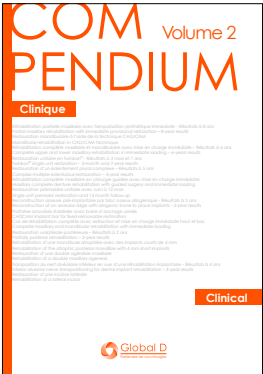
Ultimate Guided Surgery Protocol



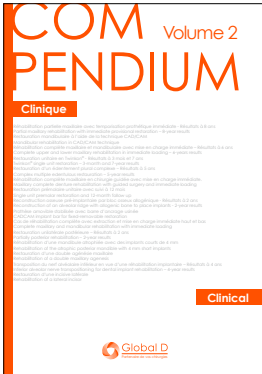
Digital solutions



Compendium Vol.1



Compendium Vol.2



Compendium Vol.3

Fields of expertise

Implantology

Oral surgery

Pre-implant surgery

Orthognathic surgery

Reconstructive surgery

Facial trauma surgery

Cancer surgery

Cranial surgery

Orthodontics

Training



ZI de Sacuny
118 avenue Marcel Mérieux
69530 Brignais
France

tel. +33 (0)4 78 56 97 00
fax. +33 (0)4 78 56 01 63

www.globald.com

A MENIX group company