

# OLYMP

P R O T O C O L

**Staged guided surgery**  
for **immediate** loading





**Total** or **partial** implant-supported rehabilitation performed using a **fully digital workflow** from surgery until advance fabrication of the temporary prosthesis. Patient treated in **two appointments**.

**Dr Matthieu Declercq**





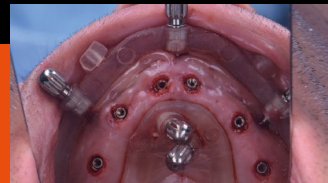
# OLYMP Protocol

A simple, digital,  
reproducible protocol



- **Fully digital workflow: step by step** for each stage in the **laboratory** and in the **dental surgery**
- **All-in-one: extractions + implantation + prosthesis placement**
- **Simplified implementation: safety – speed – fluidity**

## Clinical findings:





---

# THE CONCEPT

---

**1 FULL ARCHES** with residual teeth (**at least 3**) or **complete edentulism**.

**2 GUIDED SURGERY** with **screw-retained** implant holders.

**3 IMMEDIATE LOADING** with **temporary** prosthesis.



# Advantages of the screw-retained implant holder. A new standard for guided surgery.



**IMPROVED STABILISATION** of the **surgical guide**

**EASY INSERTION AND REMOVAL**, even in the **posterior region**

**ENHANCED PRECISION** during **placement**

**IMPROVED** patient **comfort**

**COMPATIBILITY** with the **G42 kit**



**FURTHER  
INFORMATION  
CAN BE FOUND  
ON OUR  
TECHNICAL SHEET**



ZI de Sacuny  
**118 Avenue Marcel Mérieux**  
Brignais - France

Tel. **+33 (0)4 78 56 97 00**  
Fax **+33 (0)4 78 56 01 63**

**[www.globald.com](http://www.globald.com)**

FLYER-0047-V01-02

EN

The products presented are Class I, IIa and IIb medical devices and, as such, carry the CE mark in conformance with European Directive 93/42/EEC and Regulation 2017/745. These devices are manufactured or distributed by **Global D**. These devices are not covered by the social security reimbursement list. The medical devices presented here may not be available for sale in every country. For any additional information, please contact the **Global D** sales team. Please read the instruction manuals before using our products. If you have any questions, please contact the **Global D** sales team. The instruction manuals are available in the cloud. A QR code and URL link are included on the device label. Paper instructions are nevertheless available upon request, at no additional fee, within 7 days. Send your request to: [quality@globald.com](mailto:quality@globald.com).