



In-Kone® TECHNICAL SHEET

Chapter 2: Single prosthesis

Section 2-4: Direct implant optical impression. In-Kone® WD platform



ZI de Sacuny
118 Avenue Marcel Mérieux, 69530 BRIGNAIS
Tel.: +33 (0)4 78 56 97 00 – Fax: +33 (0)4 78 56 01 63
www.globald.com

This document is intended for dental surgeons who use an intraoral camera/scanner. It describes the step-by-step procedure for taking a direct implant impression on the In-Kone® WD platform.

Equipment required

Direct implant digital coping



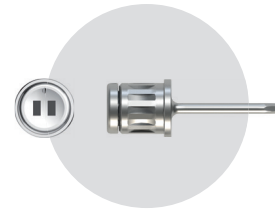
DTNDWD

*Screwless coping is
preferable*

Intraoral camera/ scanner

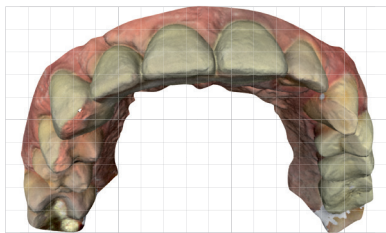


Hex head screwdriver



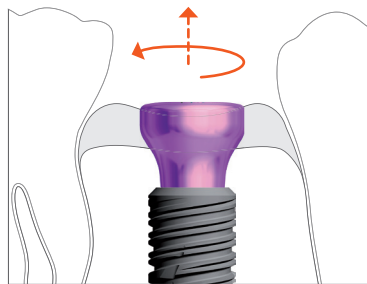
DCM1.2 (C/L)

1- Antagonist arch impression

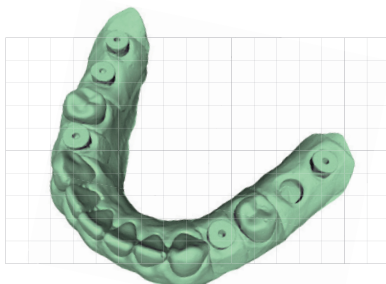


Prior to this step, start by creating the patient's order form in line with your camera's recommendations. This first acquisition enables the complete impression to be taken of the antagonist jaw.

2- Impression of the implanted arch and emergence profile

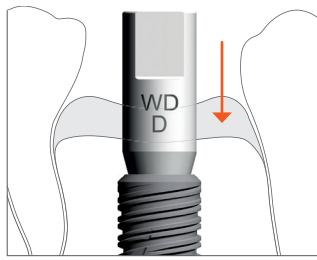


The healing screw should be removed using the DCM1.2 hex head screwdriver at the last minute to avoid collapsing the gingiva.

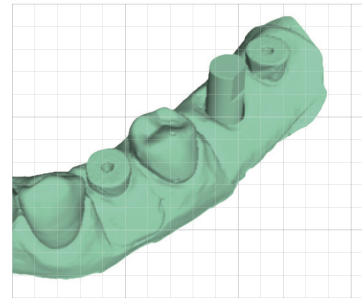


A second acquisition is performed on the implanted arch to record the emergence profile of the implanted area.

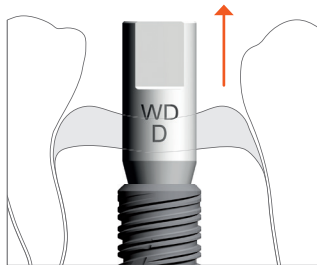
3- Impression of the area implanted with the digital coping



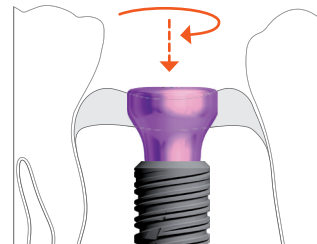
3.a - Insert the digital coping into the implant, the flat part preferably being on the vestibular side. Apply slight pressure to the head of the coping and check that it is held securely, without play. The screw is optional.



3.b - Take an impression of the implanted area and adjacent teeth.



3.c - Disengage the digital coping.

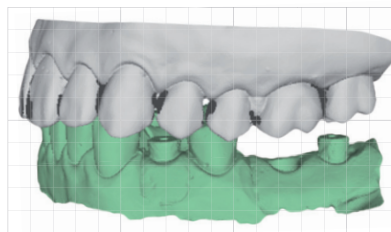


3.d - Refit the cleaned healing screw using the DCM1.2 hex head screwdriver.

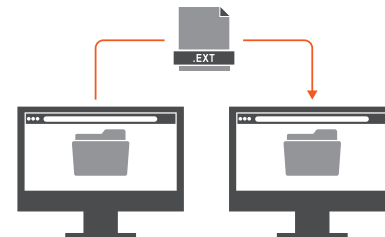


To facilitate the coping's correlation between the optical impression and the laboratory's CAD software, you are advised to place the flat part of the coping on the vestibular side. Using the DEMWD extractor can facilitate the removal of the digital coping should it become jammed. Ensure that the healing screw is cleaned before reinsertion

4- Recording the occlusion & sending the file to the laboratory



4.a - Record the bite. If correlation is not automatic, proceed manually using the 3 correlation points.



4.b - The various impressions are ready to be sent to the prosthesis laboratory, depending on the file format used and the camera's operating mode.



Remember to remove the digital coping and refit the healing screw before recording the occlusion. In some cases, steps 3 and 4 are reversed.

Additional information

- Read the cleaning and maintenance procedures before using the product.
- The use of a washer-disinfection unit is not permitted for digital copings. Global D recommends manual cleaning followed by drying.
- Some methods may be different, depending on the type of camera used.
- Steps 3 and 4 can sometimes be reversed if the clinical case is more favourable. Also, depending on the camera, it is sometimes possible to create a half-arch.



READ THE INSTRUCTION MANUAL

<http://doc-globald.com/0197.pdf>



WATCH THE VIDEO

"Step by step procedure for an optical impression"