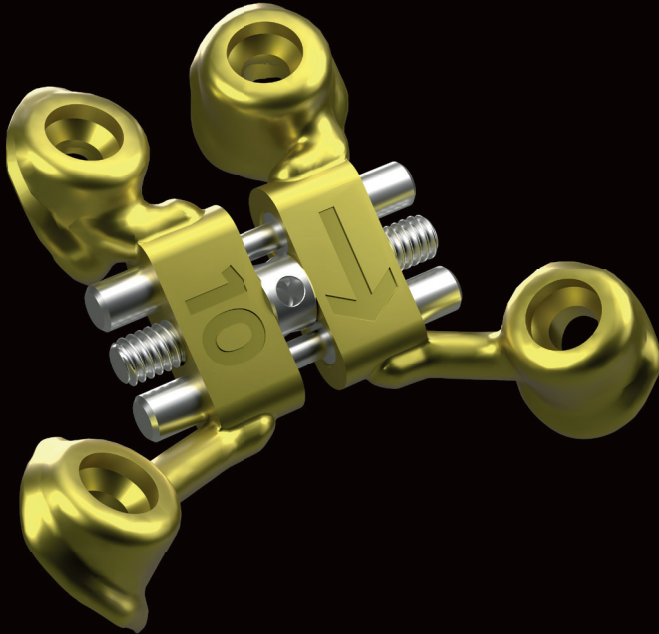


What if...

EN



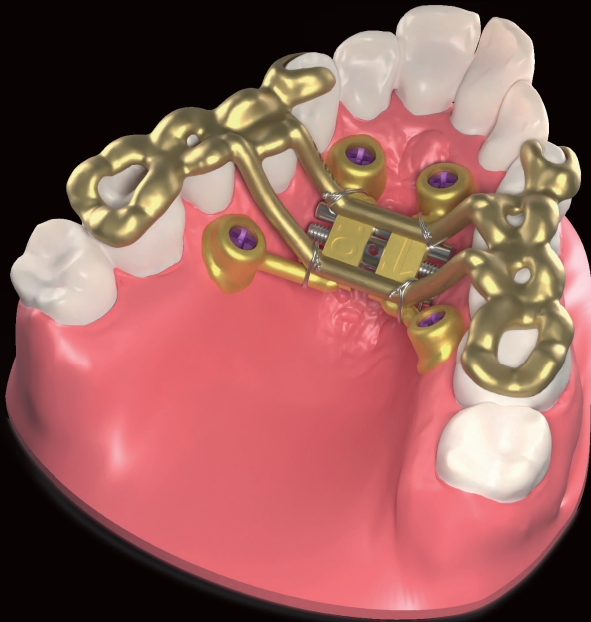
...we could simplify
cross-functional management for you?



Customised design
with patented technology

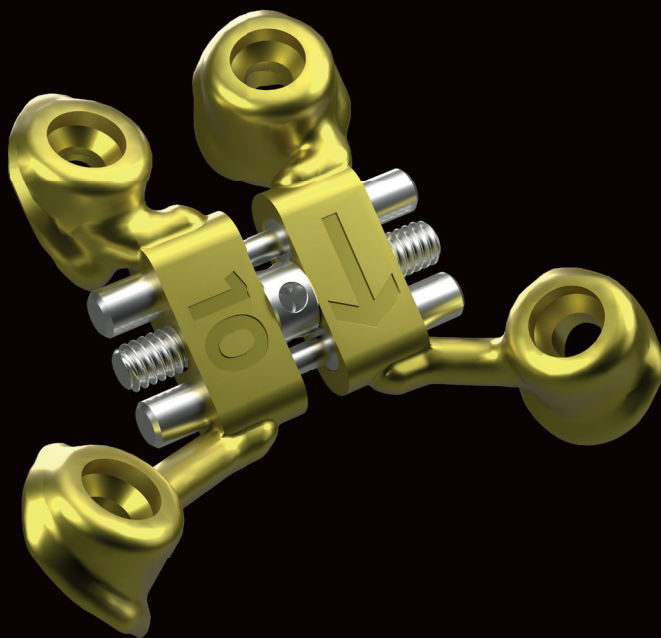
Frees you from the
inconvenience
of dental support

Takes up less
space on the
palate



Bone-supported distractor

Jaw expansion in adults



Bone support for your orthodontic treatment



Made-to-measure device,
digitally printed.

Simple, intuitive fitting
in the operating theatre.

Can be fitted in children
without cutting the bone.

Improved patient comfort since it
takes up less space on the palate.

Eliminates the disadvantages of
dental support by applying forces
directly to the bone base.

The guide ensures optimum positioning of the distractor

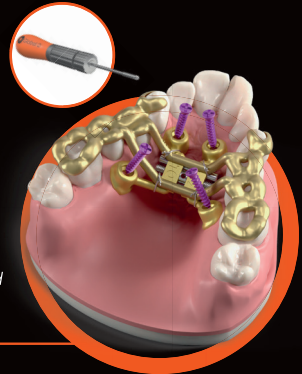
1

Tailor-made design of the distractor and guide



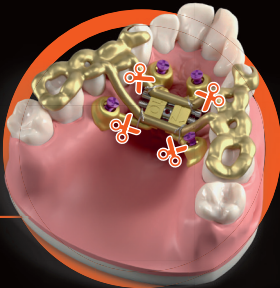
2

Place the guide and screw in the order recommended in the surgical report



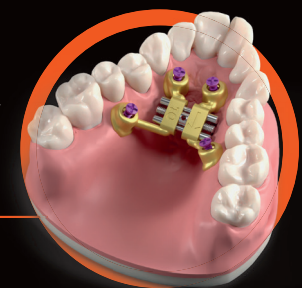
3

Cut the ligatures and remove the fitting guide



4

Keep screwing until the device makes contact



In adults: surgical insertion - SARPE (Surgically assisted rapid palatal expansion).
In children: chairside insertion, under local anaesthetic - MARPE (Miniscrew-assisted rapid palatal expansion).

Interested in our device?
 Contact your **usual seller**.

EN

Distributor:



ZI de Sacuny
 118 Avenue Marcel Mérieux
 69530 Brignais – France
 Tel. +33 (0)4 78 56 97 00
 advexport@globald.com
 www.globald.com

Manufacturer:



Parc Inopolis
 206 route de Vourles
 69230 Saint-Genis-Laval – France
 Tél. +33 (0)4 26 78 76 74
 www.oneortho-medical.com



CATALOG-0142-V02-02

The distractor and its guide are made-to-measure orthognatic expansion devices compliant with the general safety and performance requirements laid down by Annex I to Regulation (EU) 2017/745 manufactured by One Ortho Medical and distributed by GlobalD. These devices are not covered by the social security reimbursement list. The activation key and the disjointed key are class I, CE marked medical devices compliant with Regulation (EU) 2017/745 manufactured by Leone SPA and distributed by GlobalD. Screws from the ORTRAUTEK range are Class IIb medical devices with CE marking (CE0459) in conformance with Directive 93/42/EEC. These devices are covered by the social security reimbursement list. Please read the instructions for these medical devices before use. The medical devices presented here may not be available for sale in every country. For any additional information, please contact the Global D sales team.